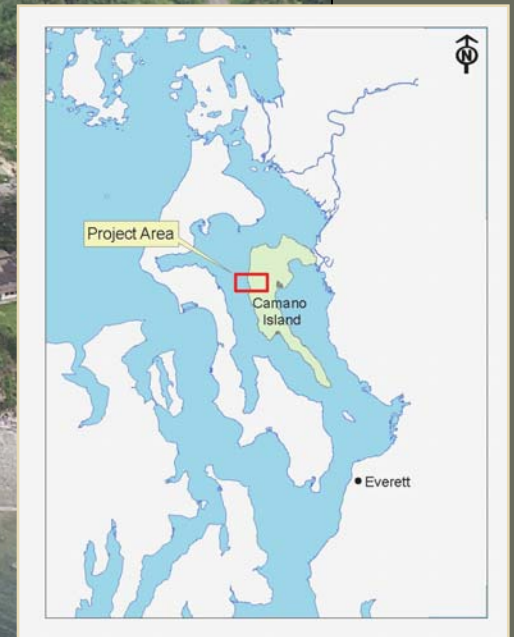


West Camano - Henry Hollow Acquisition and Restoration Project



Island County
Planning & Community Development
Po Box 5000
Coupeville, Wa 98239-5000

Location: West Camano Island



How does the project fit with ALEA?

- Protection
- Restoration
- Public Access
- Public Education
- Urgency/Need
- Community Support

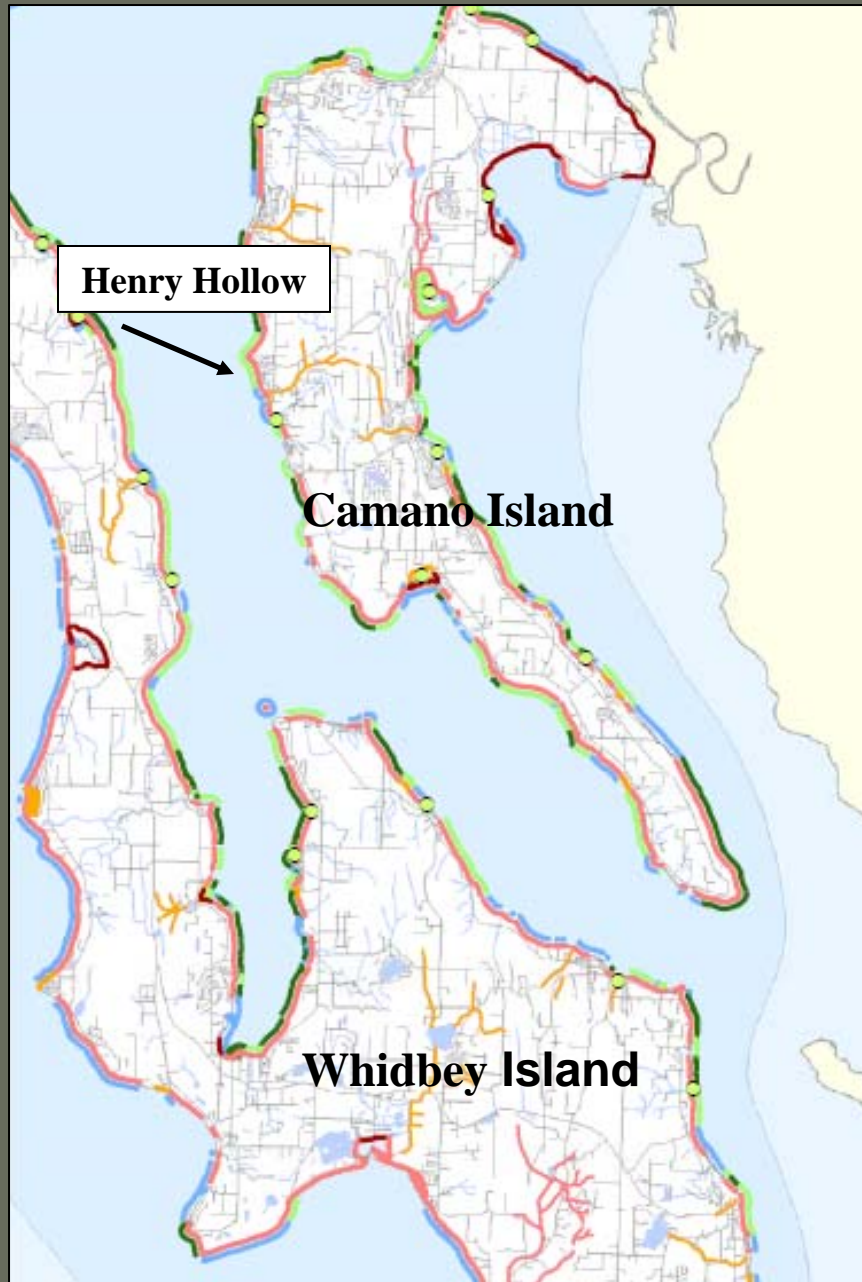


Henry Hollow beach access.

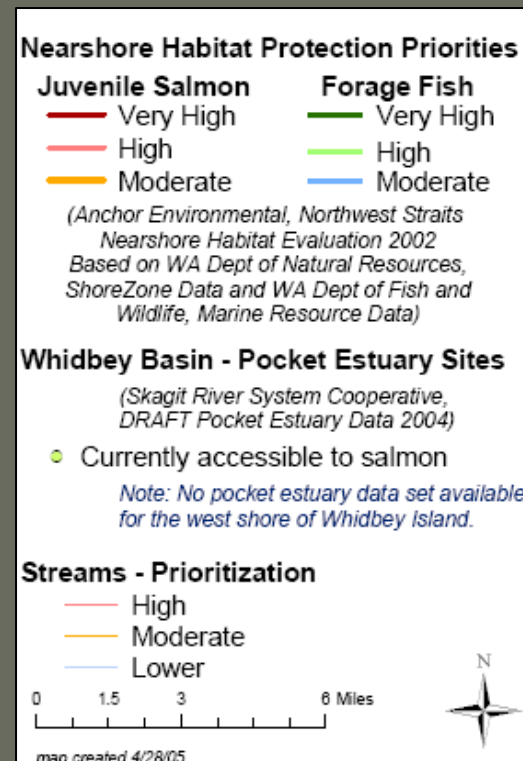
PROTECTION of valued features on property

- Fish & Wildlife habitat
- Open space
- Gravel Beach/Shoreline
- Intermittent Stream
- Feeder Bluffs

PROTECTS



- Protects *HIGH PRIORITY* nearshore habitat included in Island County's WRIA 6 Multi-species Salmon Recovery Plan 2005
- Shoreline Master Plan 2001 recommends “protection & preservation” of shoreline resources



PROTECTS Wildlife Habitat



PROTECTS Upland Open Space & Lowland Gravel Beach



PROTECTS Intermittent Coastal Stream

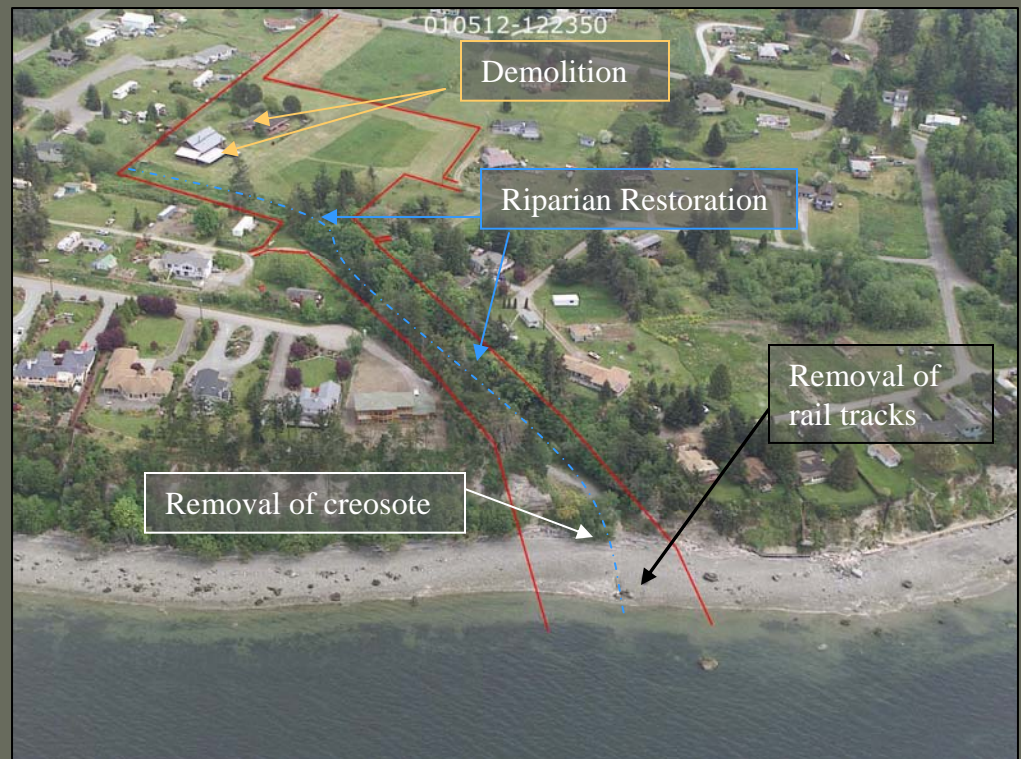


PROTECTS Feeder Bluffs

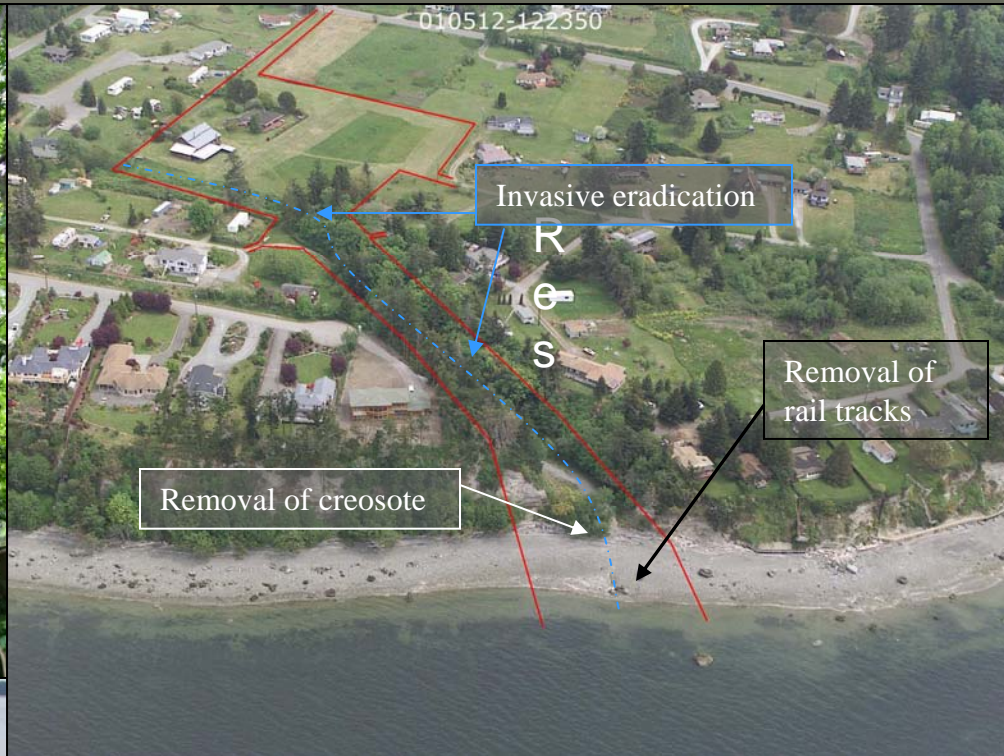


RESTORATION

- Creek
- Creosote
- Tracks in shoreline
- Demolition



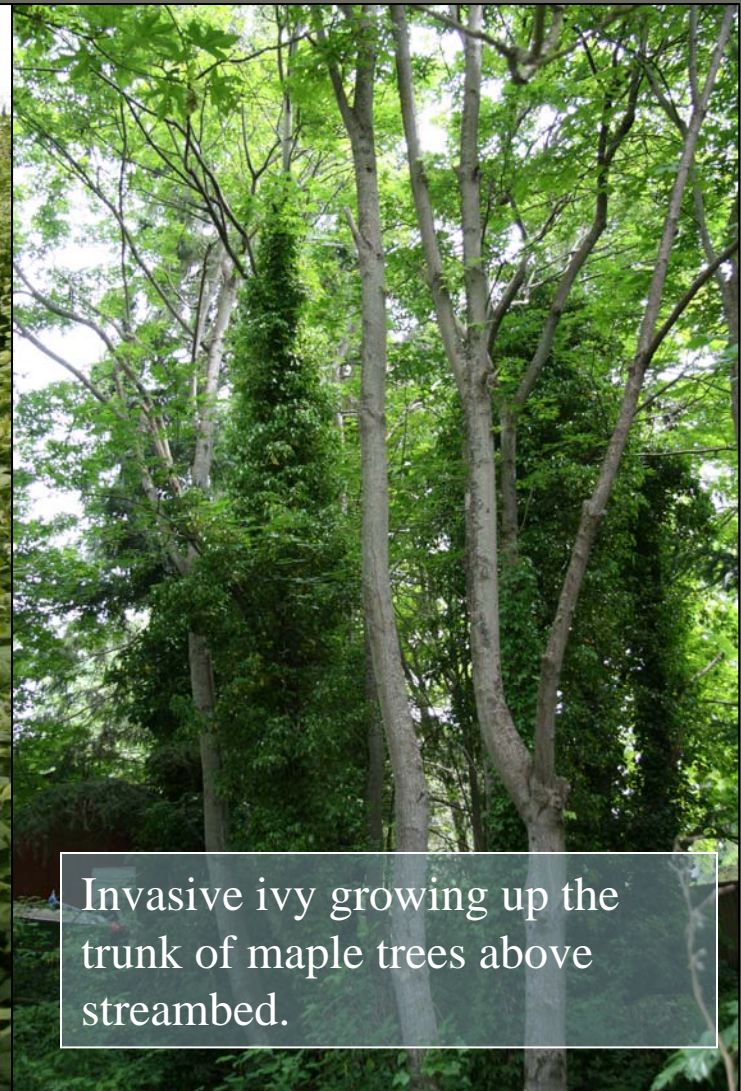
Riparian RESTORATION



RESTORATION Eradication of Invasive Species



Creek hidden by
invasive blackberry
bushes.



Invasive ivy growing up the
trunk of maple trees above
streambed.

RESTORATION Demolition



PUBLIC ACCESS

Main road
access



ADA trail and
bridge



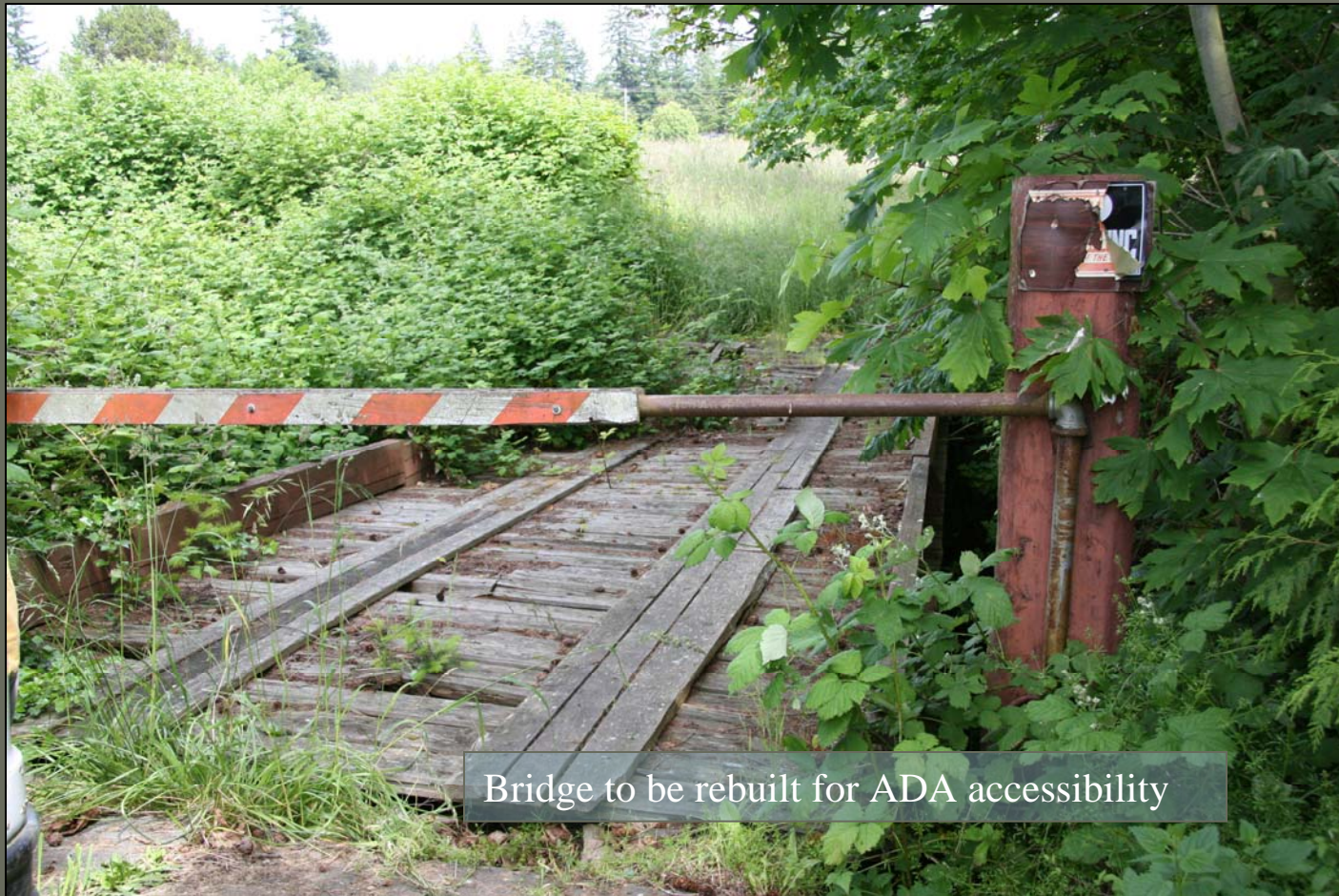
Neighborhood
access



Trail to beach
on existing dirt
road



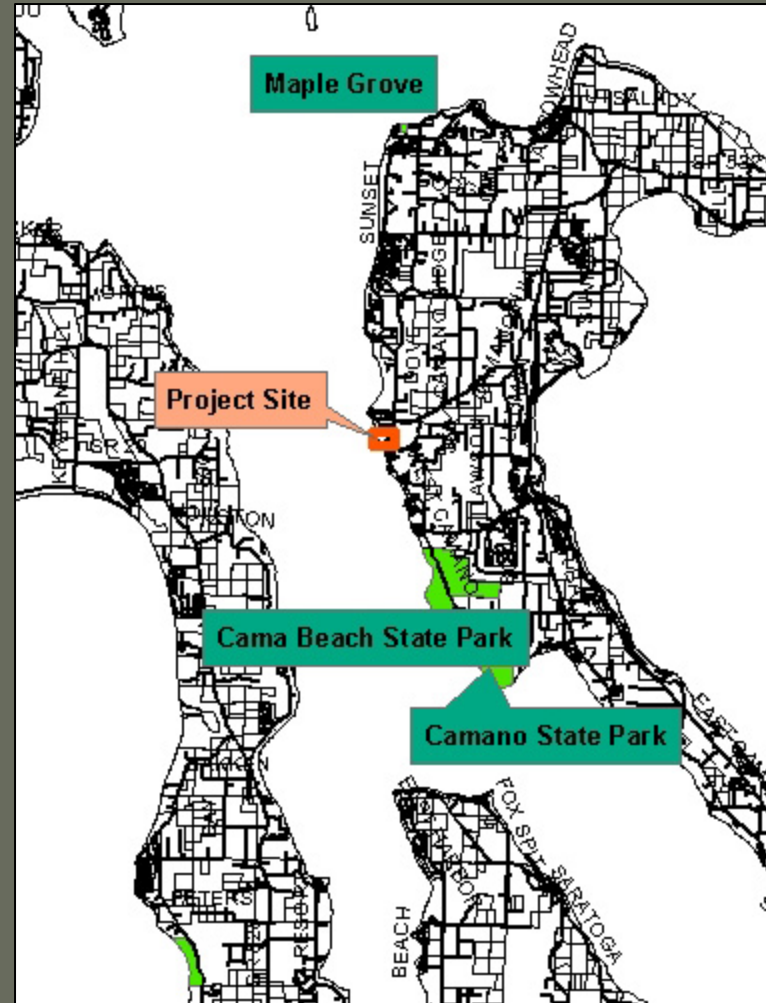
ADA Access



Bridge to be rebuilt for ADA accessibility

PUBLIC ACCESS

- Closest public beach access
 - Maple Grove 5.5 miles north
 - Cama Beach State Park 2.5 miles south
- Goal of Island County's
 - Non-motorized Trails Plan
 - Parks Plan



Conceptual Park Plan

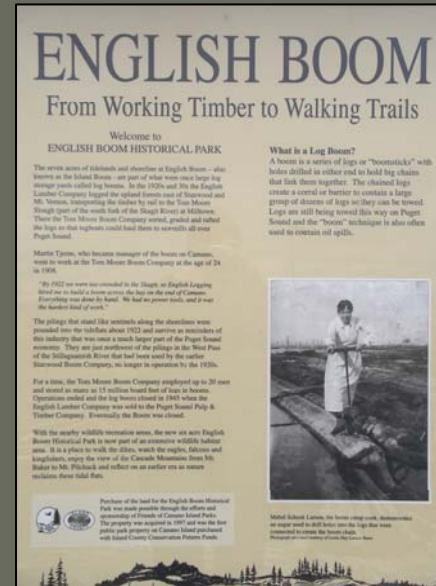


1111111111111111



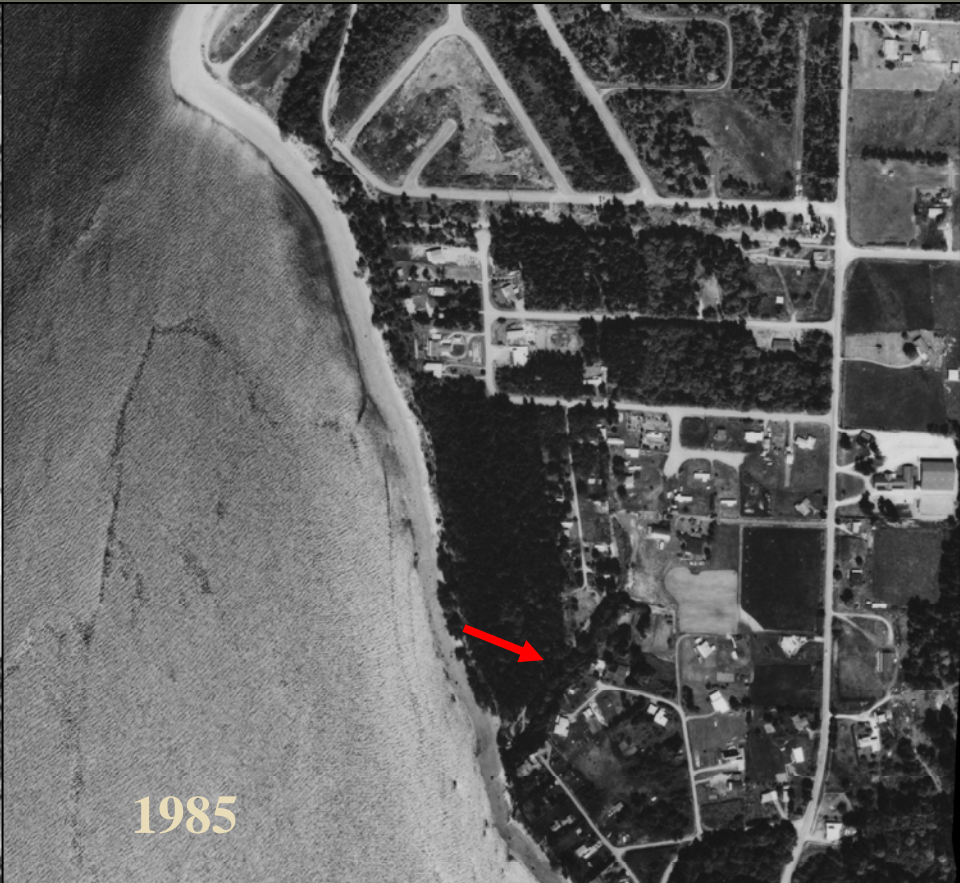
Public Education

- Educational signs & kiosk at Island County parks



Urgency & Need

- Threat of Development
 - Rural Residential Zoning
 - Subdivision of up to *14 properties* from Henry Hollow property



Urgency & Need

- Owner is willing to donate equity and interest of property to Island County



Community Support

- Friends of Camano Island Parks (FOCIP)
 - Non-profit community organization, incorporated in 1993.



Friends of Camano Island Parks



FOCIP donated dike crossing at Island County's Iverson Preserve.

Community Support

- Support from local and state representatives

