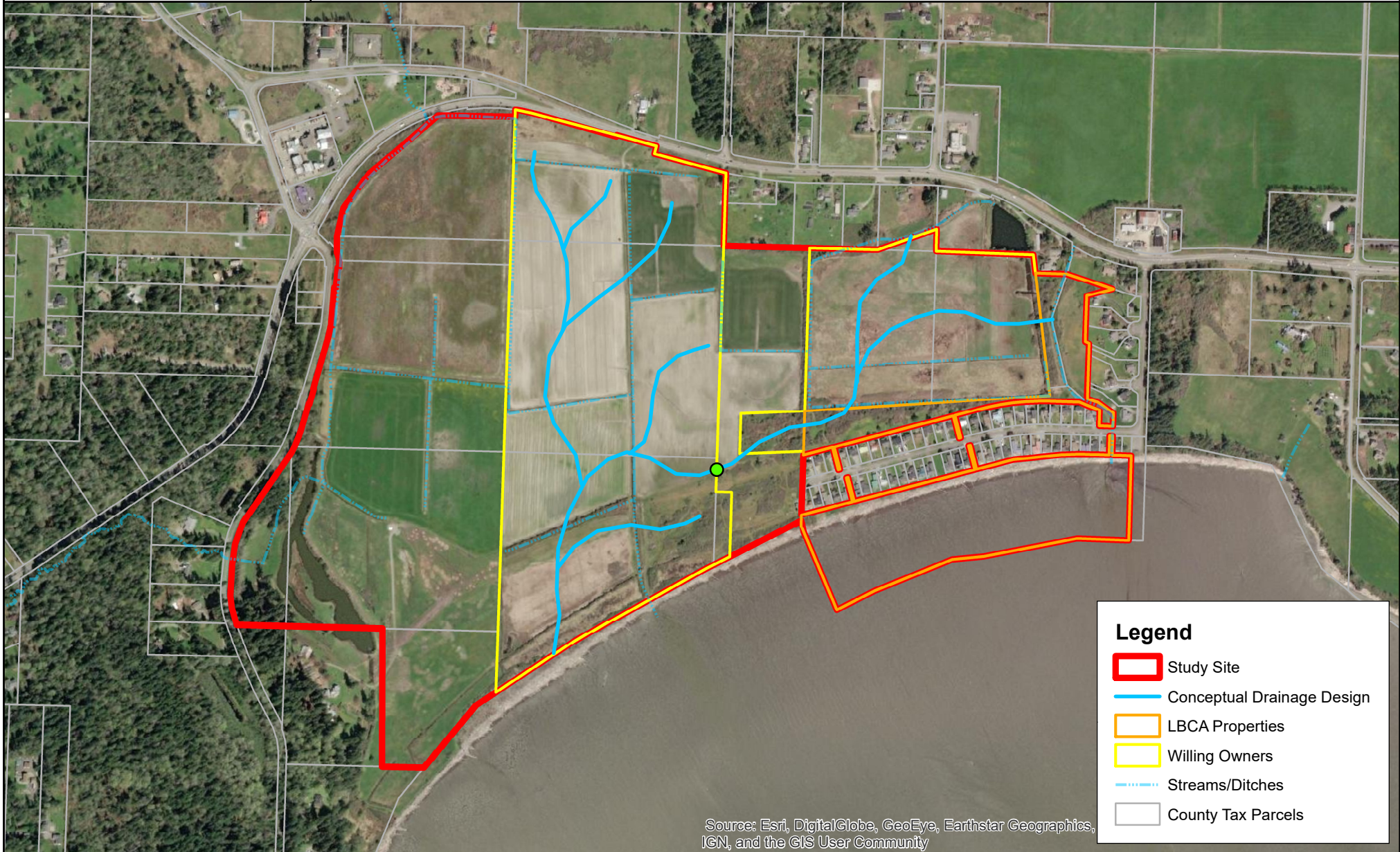


Livingston Bay Protection & Restoration: Conceptual Plan



Legend

- Study Site
- Conceptual Drainage Design
- LBCA Properties
- Willing Owners
- Streams/Ditches
- County Tax Parcels



Property boundaries are taken from Island County GIS tax parcel maps. These boundaries are approximate and may not match on-the-ground fencelines or actual survey markers.



Date: 8/9/2022