

Figures

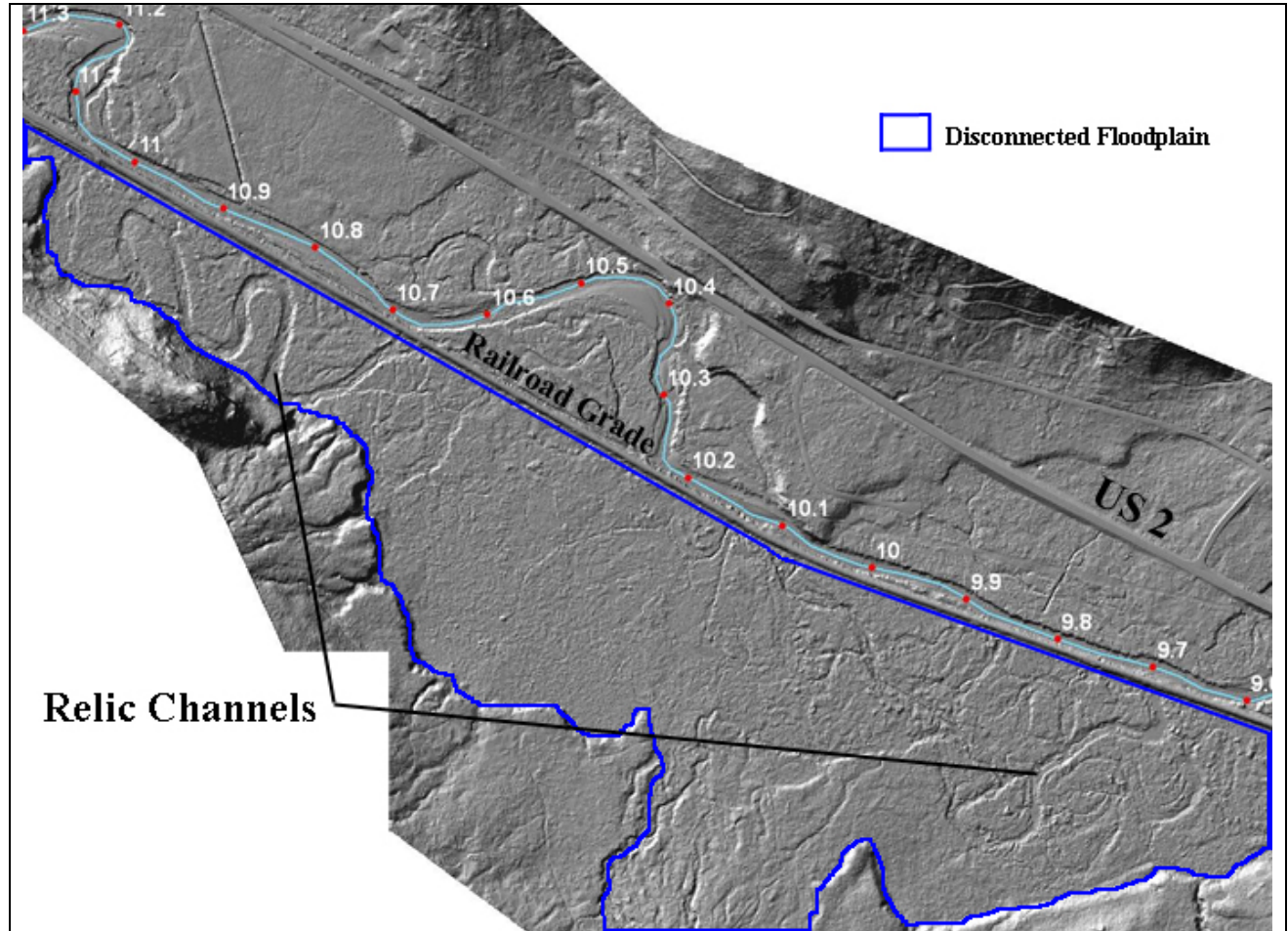


Figure 1. LiDAR dataset for an approximately 1.7 mile stretch of Nason Creek (highlighted in blue). The main channel is highlighted in blue, with river miles marked (red) and labeled. Direction of flow is from left to right. Note how the DEM highlights fluvial terrain features, such as flood terraces and relic channels, as well as infrastructure, such as the BNSF Railroad grade and US Highway 2.