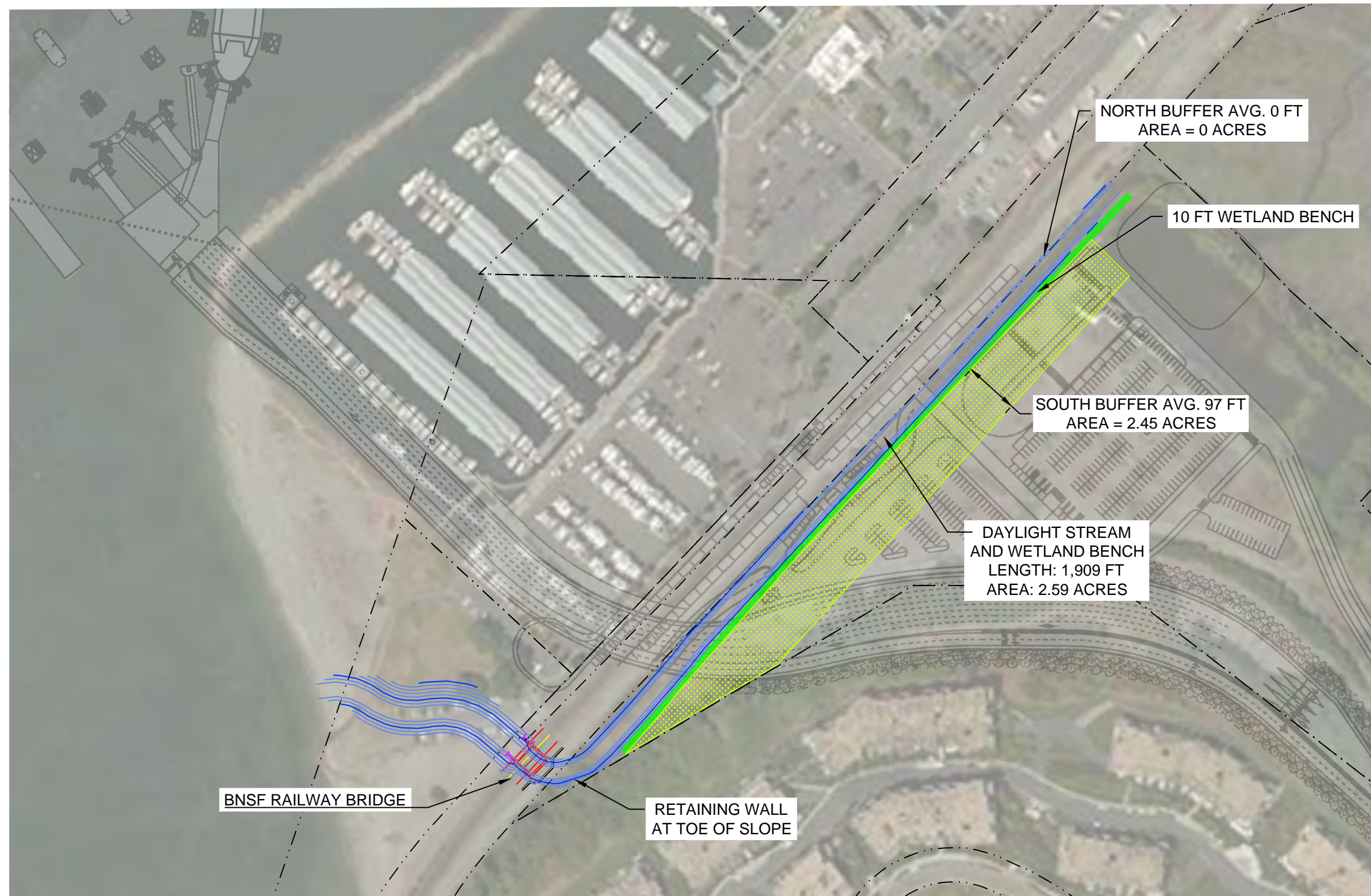




Filename: \\SEA-FS\\Vol1\\EF21-1 SEA\\12500s\\12588 Willow Creek Daylight H&S and Soils Study\\CAD\\Figure\\21-1-12588 Buffer Options - 2018.dwg Date: 03-08-2019 Login: CCB



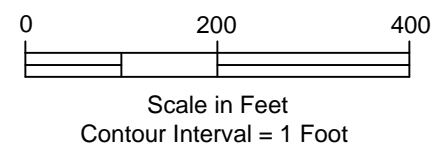
#### LEGEND

- PROPOSED DAYLIGHT CONTOUR
- WETLAND RESTORATION
- RIPARIAN BUFFER
- SNOHOMISH COUNTY GIS PARCELS

#### NOTE

Figure adapted from electronic files, 2004\_Willow\_Cr\_Survey.dwg, 2008\_Marsh\_Survey.dwg, 20120049 TOPO.dwg and Basemap.dwg received 08-04-2014. Also aerial.jpg received 08-11-2014.

WSDOT Ferry preferred alternative location is approximate.



WILLOW CREEK DAYLIGHT PROJECT  
EXPANDED MARSH CONCEPT DESIGN  
AND HYDRAULIC MODELING  
EDMONDS, WASHINGTON

#### ALTERNATIVE 1 ALIGNMENT AND BUFFERS

June 2019

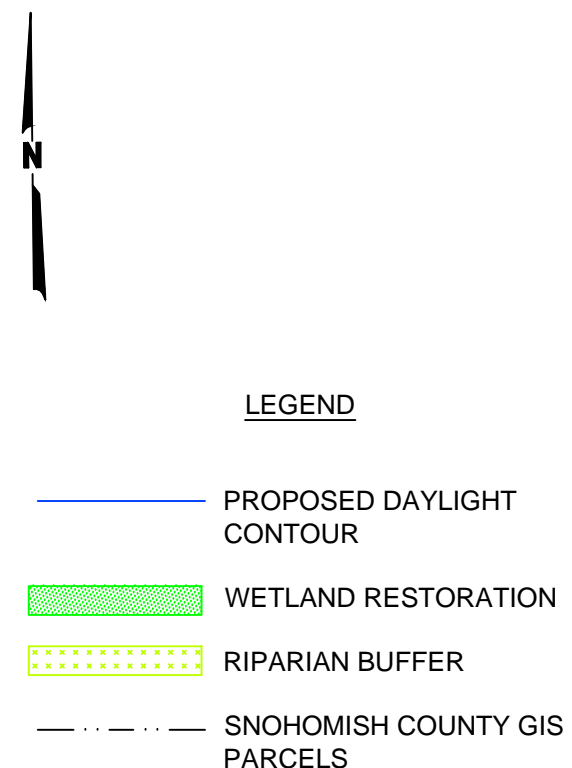
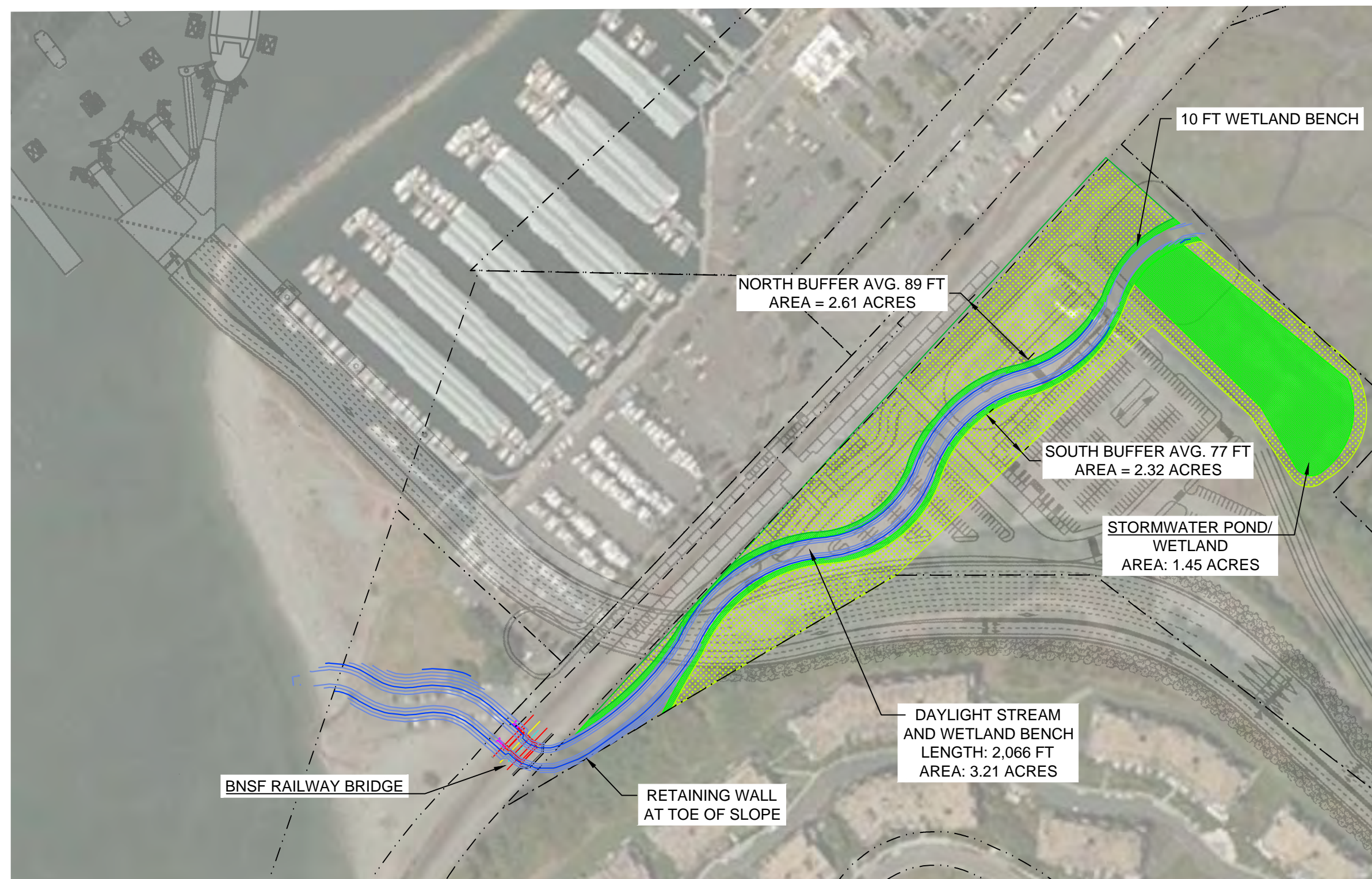
21-1-12588-050

**SHANNON & WILSON, INC.**  
GEOTECHNICAL AND ENVIRONMENTAL CONSULTANTS

**FIG. 3**



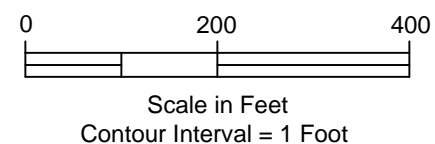
Filename: I:\EF21-1 SEA\2500s\12588 Willow Creek Daylight H& and Soils Study\CAD\Figure211-12588 Buffer Options - 2018.dwg Date: 03-09-2019 Login: CCB



**NOTE**

Figure adapted from electronic files, 2004\_Willow\_Cr\_Survey.dwg, 2008\_Marsh\_Survey.dwg, 20120049 TOPO.dwg and Basemap.dwg received 08-04-2014. Also aerial.jpg received 08-11-2014.

WSDOT Ferry preferred alternative location is approximate.



WILLOW CREEK DAYLIGHT PROJECT  
EXPANDED MARSH CONCEPT DESIGN  
AND HYDRAULIC MODELING  
EDMONDS, WASHINGTON

**ALTERNATIVE 2  
ALIGNMENT AND BUFFERS**

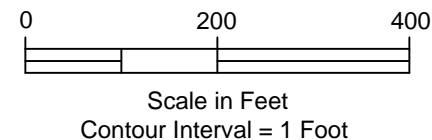
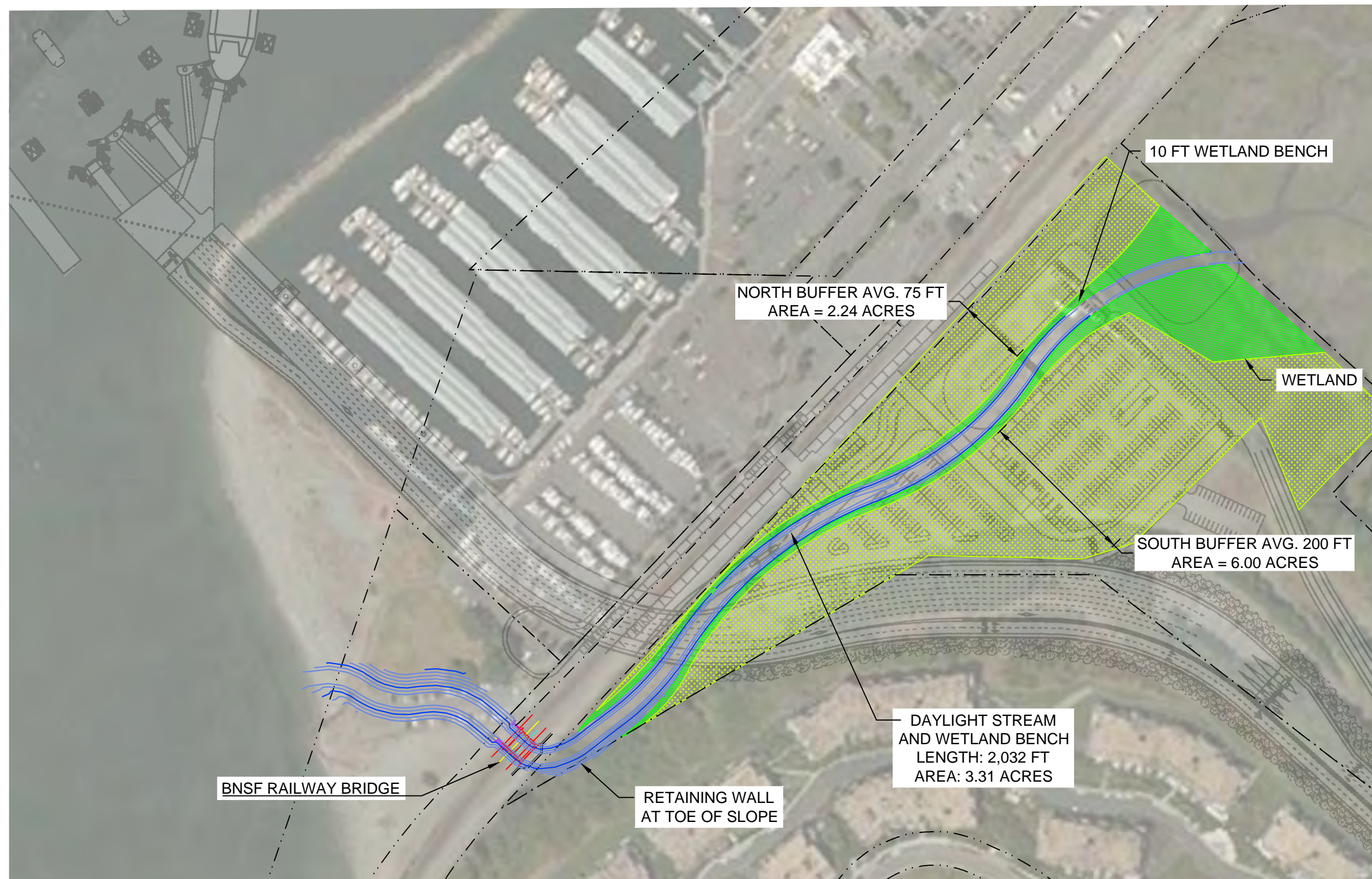
June 2019

21-1-12588-050

**SHANNON & WILSON, INC.**  
GEOTECHNICAL AND ENVIRONMENTAL CONSULTANTS

**FIG. 4**





WILLOW CREEK DAYLIGHT PROJECT  
EXPANDED MARSH CONCEPT DESIGN  
AND HYDRAULIC MODELING  
EDMONDS, WASHINGTON

**ALTERNATIVE 3  
ALIGNMENT AND BUFFERS**

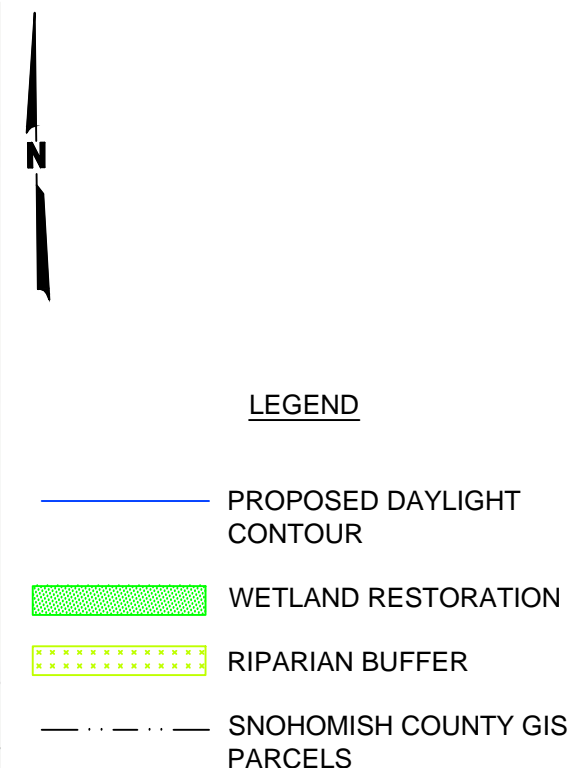
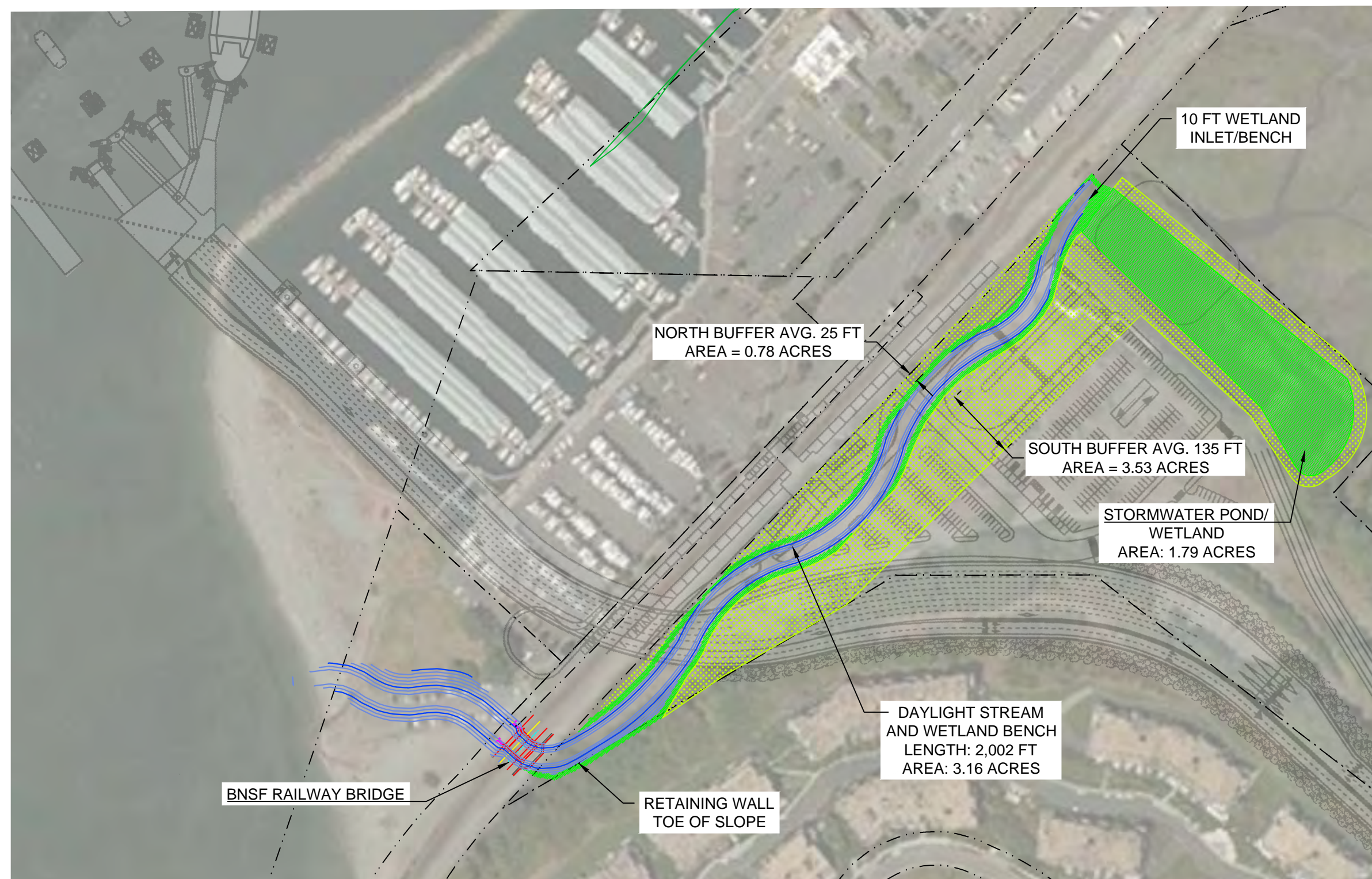
June 2019 21-1-12588-050

**SHANNON & WILSON, INC.**  
GEOTECHNICAL AND ENVIRONMENTAL CONSULTANTS

**FIG. 5**



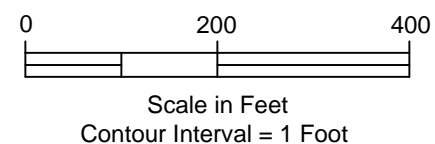
Filename: I:\EF21-1 SEA\2500s\12588 Willow Creek Daylight H& and Soils Study\CAD\Figure211-12588 Buffer Options - 2018.dwg Date: 03-09-2019 Login: CCB



**NOTE**

Figure adapted from electronic files, 2004\_Willow\_Cr\_Survey.dwg, 2008\_Marsh\_Survey.dwg, 20120049 TOPO.dwg and Basemap.dwg received 08-04-2014. Also aerial.jpg received 08-11-2014.

WSDOT Ferry preferred alternative location is approximate.



WILLOW CREEK DAYLIGHT PROJECT  
EXPANDED MARSH CONCEPT DESIGN  
AND HYDRAULIC MODELING  
EDMONDS, WASHINGTON

**ALTERNATIVE 4  
ALIGNMENT AND BUFFERS**

June 2019

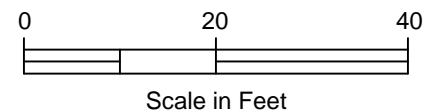
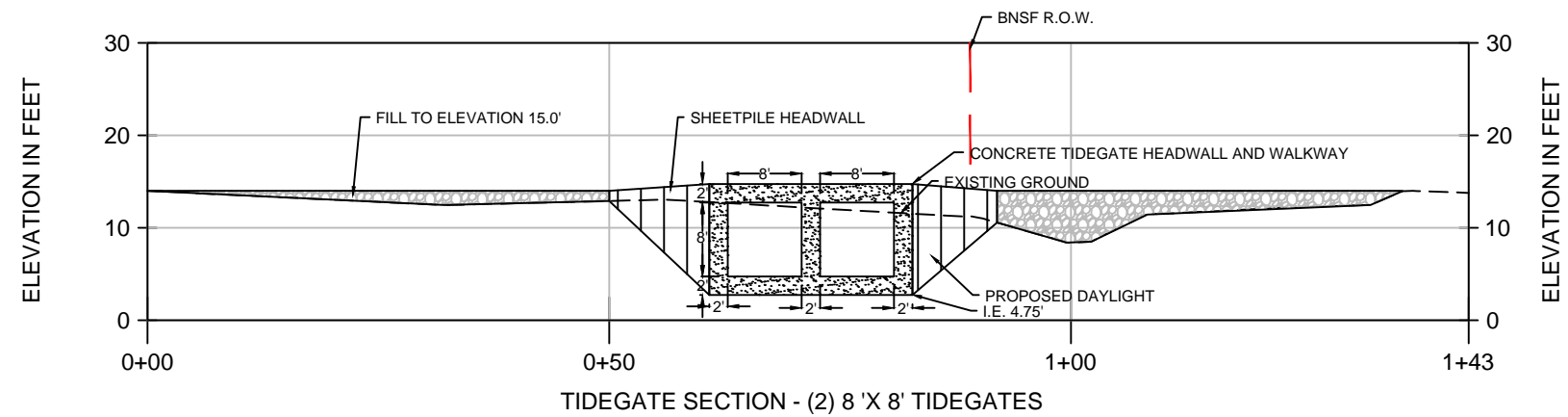
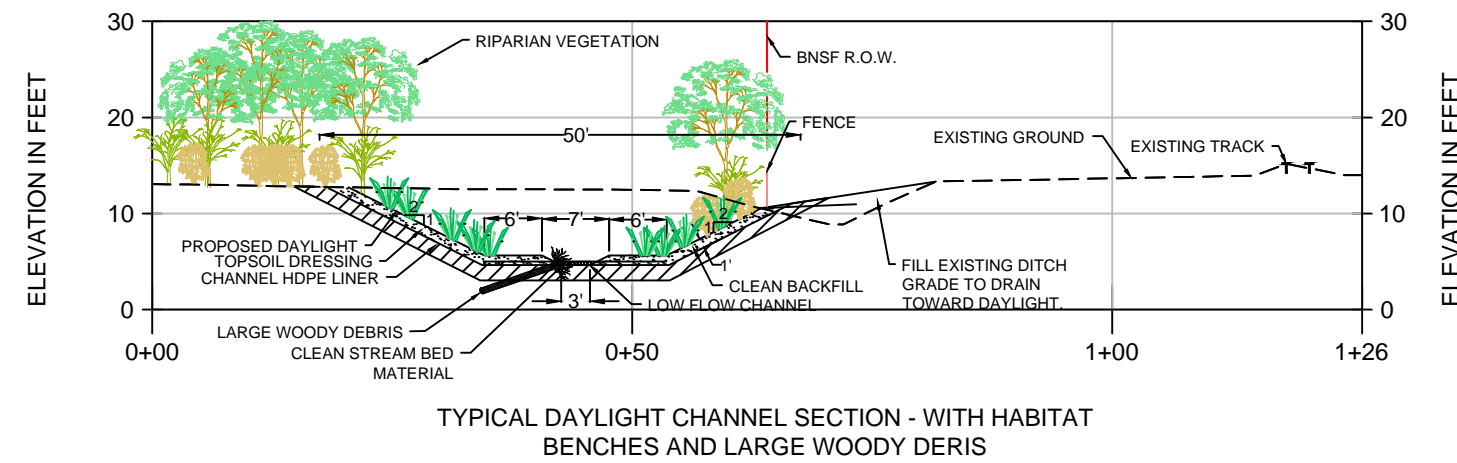
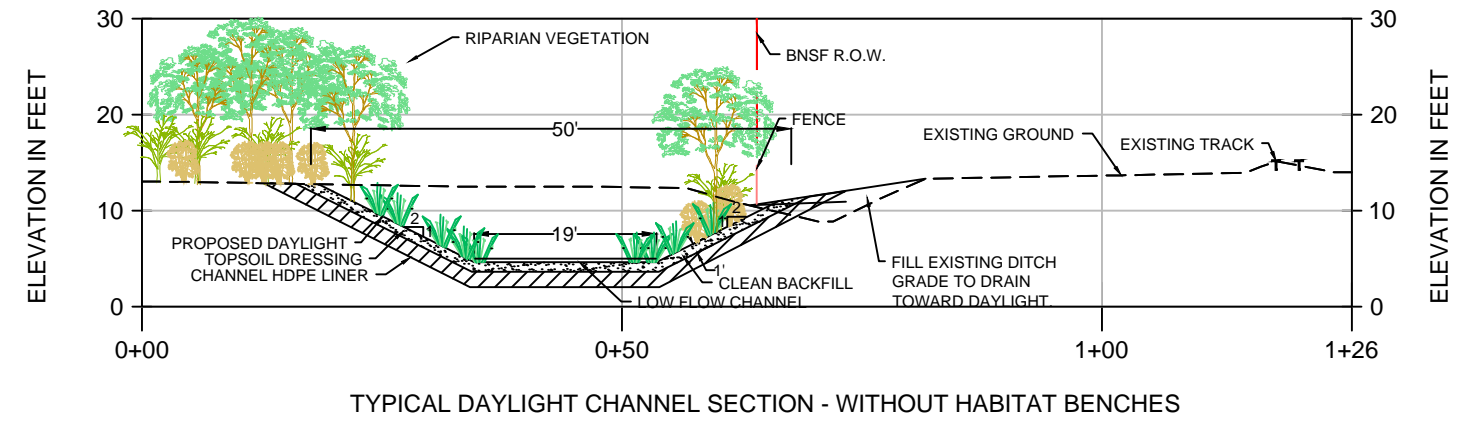
21-1-12588-050

**SHANNON & WILSON, INC.**  
GEOTECHNICAL AND ENVIRONMENTAL CONSULTANTS

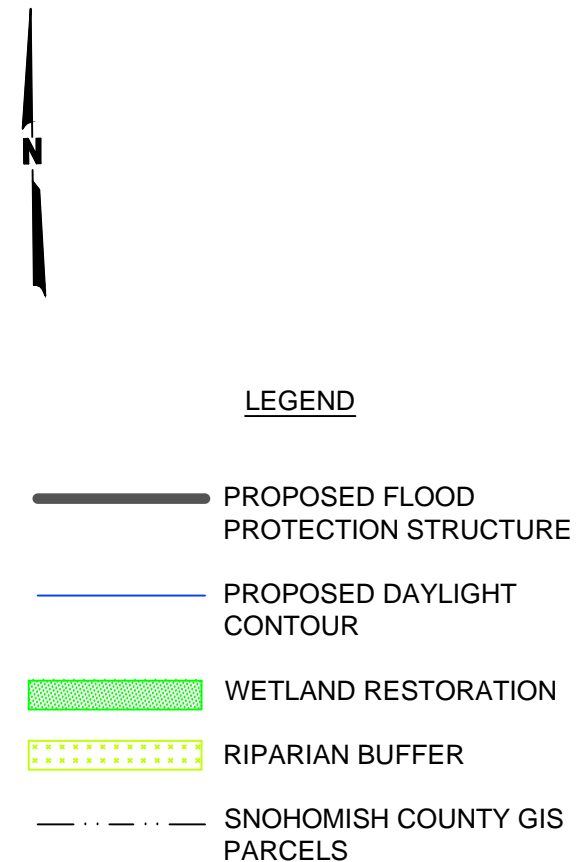
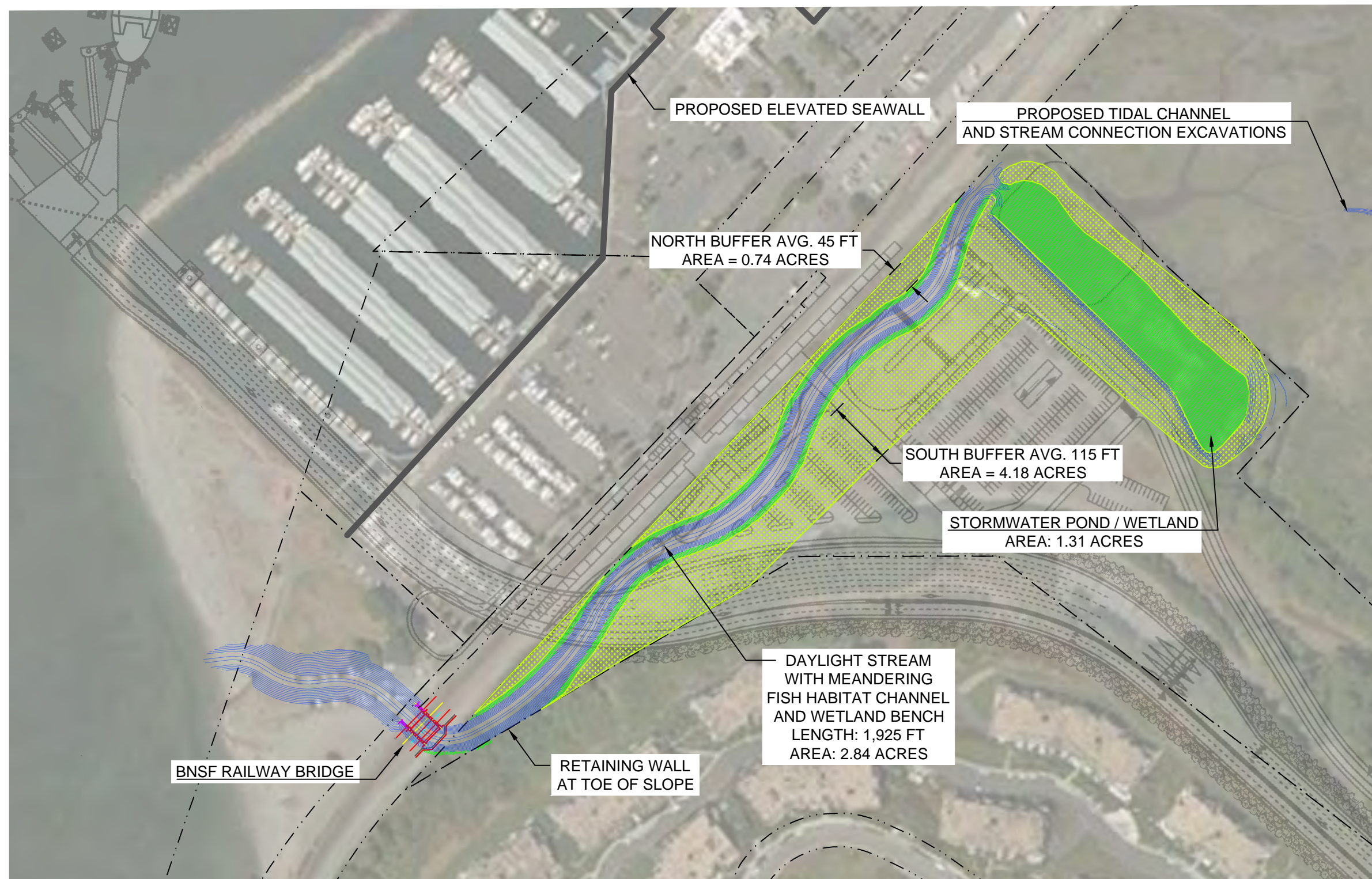
**FIG. 6**



Filename: I:\EF\21-1 SEA\12500s\12588 Willow Creek Daylight H& and Soils Study\CAD\Figure\21-1-12588-050\_Fig 1\_Typical Sections\_09MAR2019.dwg Date: 03-09-2019 Login: CCB



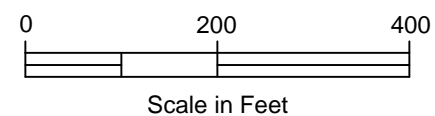




**NOTE**

Figure adapted from electronic files, 2004\_Willow\_Cr\_Survey.dwg, 2008\_Marsh\_Survey.dwg, 20120049 TOPO.dwg and Basemap.dwg received 08-04-2014. Also aerial.jpg received 08-11-2014.

WSDOT Ferry preferred alternative location is approximate.



WILLOW CREEK DAYLIGHT PROJECT  
EXPANDED MARSH CONCEPT DESIGN  
AND HYDRAULIC MODELING  
EDMONDS, WASHINGTON

**ALTERNATIVE 5  
ALIGNMENT**

June 2019

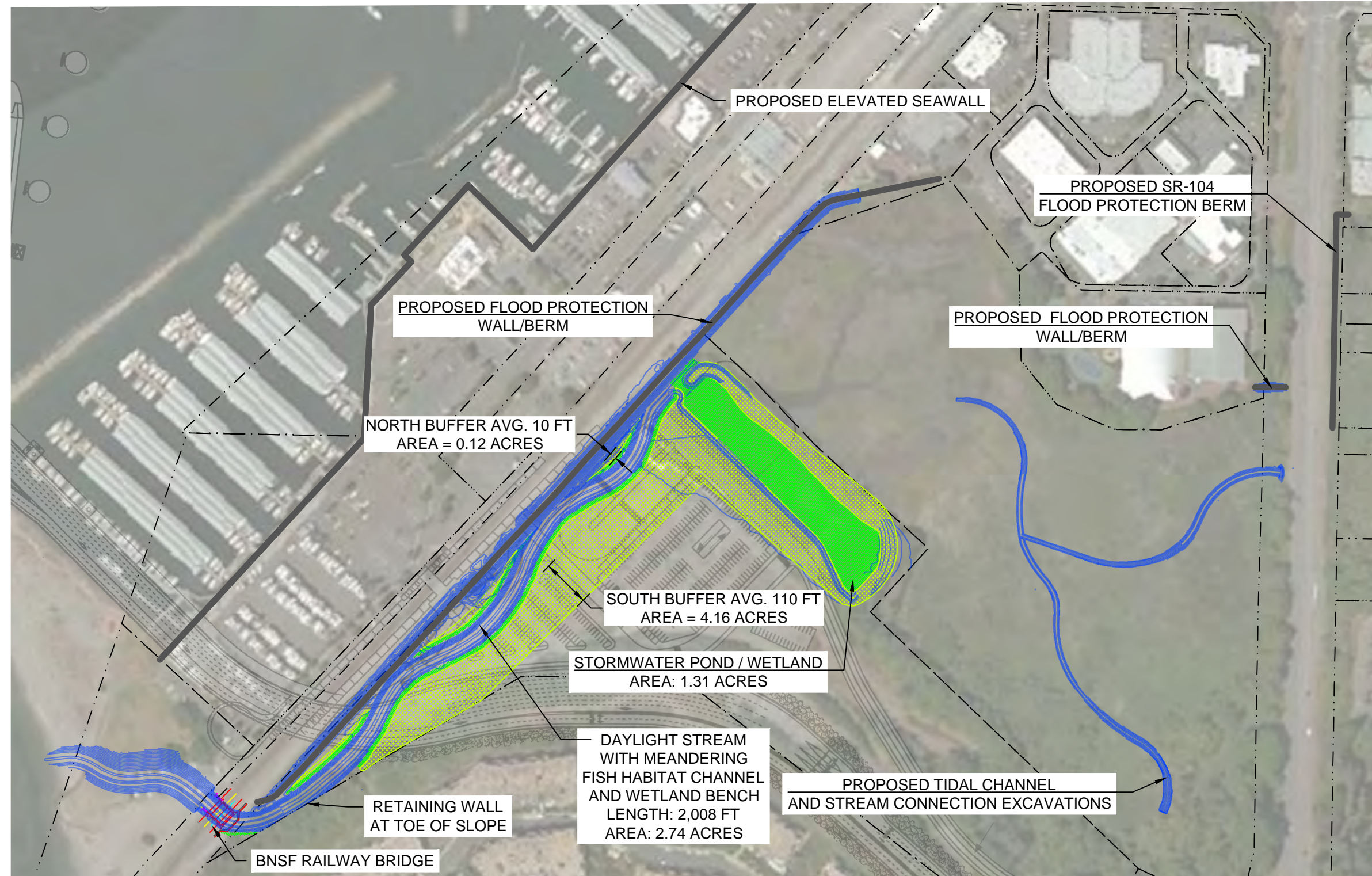
21-1-12588-050

**SHANNON & WILSON, INC.**  
GEOTECHNICAL AND ENVIRONMENTAL CONSULTANTS

**FIG. 8**



Filename: I:\EF21-1 SEA\12500s\12588 Willow Creek Daylight H&S and Soils Study\050 H&H FINAL ALTS - FLOODGATE\Report\Figures\Grading\Figures - 2018 - Copy.dwg Date: 03-09-2019 Login: CCB



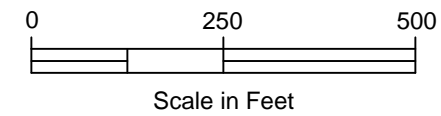
**LEGEND**

- PROPOSED FLOOD PROTECTION STRUCTURE
- PROPOSED DAYLIGHT CONTOUR
- WETLAND RESTORATION
- RIPARIAN BUFFER
- SNOHOMISH COUNTY GIS PARCELS

**NOTE**

Figure adapted from electronic files, 2004\_Willow\_Cr\_Survey.dwg, 2008\_Marsh\_Survey.dwg, 20120049 TOPO.dwg and Basemap.dwg received 08-04-2014. Also aerial.jpg received 08-11-2014.

WSDOT Ferry preferred alternative location is approximate.



WILLOW CREEK DAYLIGHT PROJECT  
EXPANDED MARSH CONCEPT DESIGN  
AND HYDRAULIC MODELING  
EDMONDS, WASHINGTON

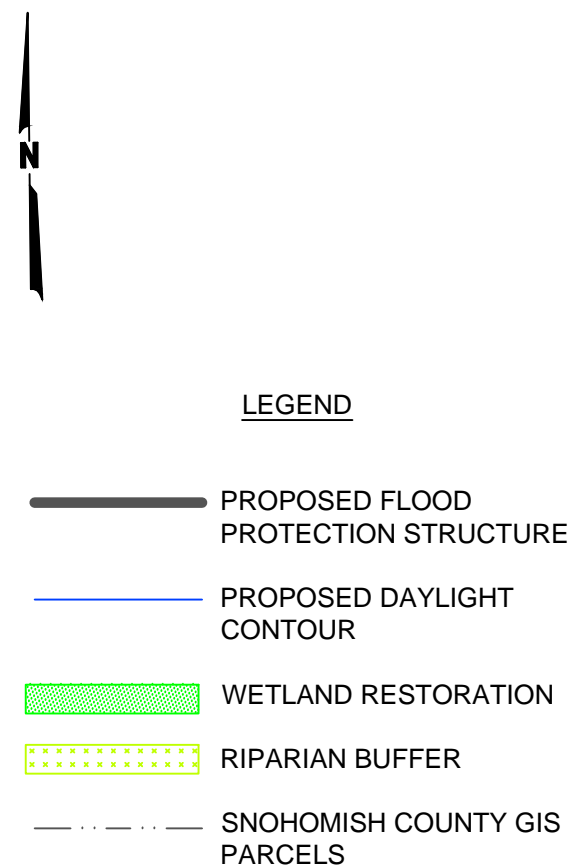
**ALTERNATIVE 6  
ALIGNMENT**

June 2019 21-1-12588-050

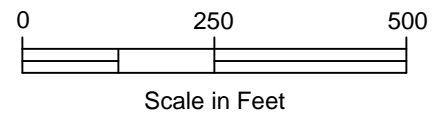
**SHANNON & WILSON, INC.**  
GEOTECHNICAL AND ENVIRONMENTAL CONSULTANTS

**FIG. 9**





**NOTE**  
Figure adapted from electronic files, 2004\_Willow\_Cr\_Survey.dwg, 2008\_Marsh\_Survey.dwg, 20120049 TOPO.dwg and Basemap.dwg received 08-04-2014. Also aerial.jpg received 08-11-2014.  
  
WSDOT Ferry preferred alternative location is approximate.



WILLOW CREEK DAYLIGHT PROJECT EXPANDED MARSH CONCEPT DESIGN AND HYDRAULIC MODELING EDMONDS, WASHINGTON	
<b>ALTERNATIVE 7 ALIGNMENT</b>	
June 2019	21-1-12588-050
SHANNON & WILSON, INC. GEOTECHNICAL AND ENVIRONMENTAL CONSULTANTS	<b>FIG. 10</b>