

APPENDIX B
PHOTOS FROM 9/15/2015 FIELD RECONNAISSANCE
PESHAISTIN CREEK RM 8.4 TO 9.2

Photo 1. Bridge crossing at Ingalls Creek Road near RM 8.4 (view downstream).

Photo 2. Active channel flanked by approximately 25 foot high bluff underlain by alluvial fan deposits upstream of the bridge at Ingalls Creek Road (view downstream). The road embankment for SR 97 confines the channel to the east.

Photo 3. Active channel near RM 8.7 flanked by the road embankment for SR 97 to the east and excavated spoils pile to the west (view downstream).

Photo 4. Excavated spoils pile in left overbank area flanking the active channel near RM 8.7.

Photo 5. Abandoned channel feature parallel to the active channel near RM 8.7 flanked by excavated spoils pile to the east and alluvial fan deposits from Hansel Creek to the west.

Photo 6. Terrace surface to the west of Peshastin Creek (RM 8.7-8.9).

Photo 7. Narrow floodplain surface approximately 40 feet wide along left bank near RM 8.7.

Photo 8. Active channel near RM 8.7 (view upstream).

Photo 9. Terrace surface along left bank near RM 8.8.

Photo 10. Active channel near RM 8.9 (view downstream).

Photo 11. Left bank near RM 8.9 with steep slope and eroding terrace just downstream of high bluff formed by glacial deposits.

Photo 12. Active channel confined by the SR 97 road embankment and a high glacial terrace near RM 9.

Photo 13. Confluence of Peshastin Creek with Ingalls Creek.

Photo 14. Historical channel disconnected by SR 97.

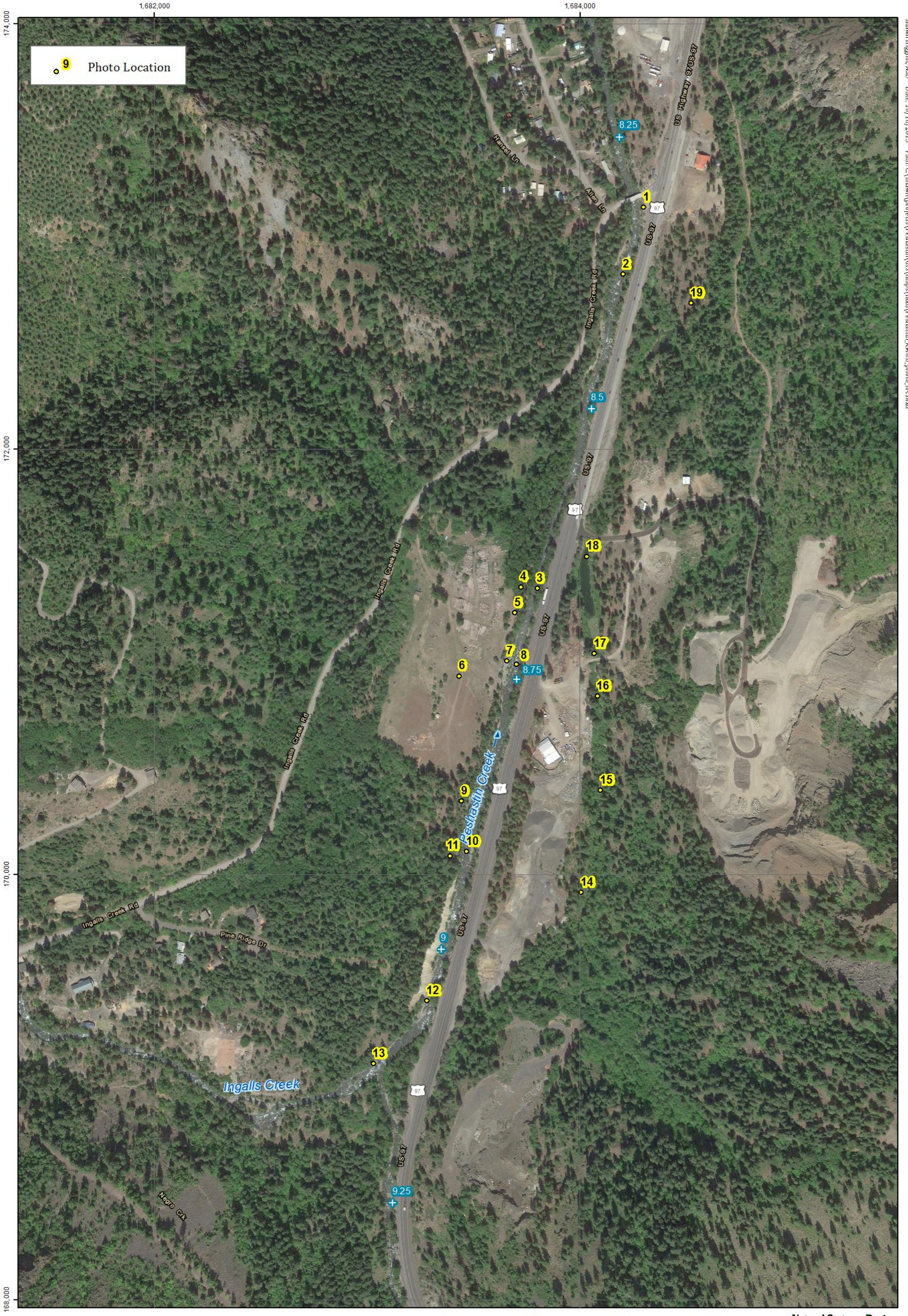
Photo 15. Historic channel partially blocked by fill pushed in from the area to the west between the old channel and SR 97.

Photo 16. Historical channel.

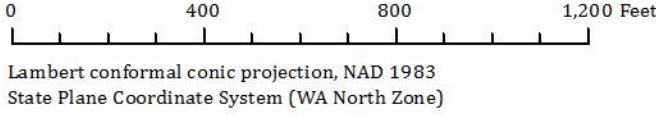
Photo 17. Historical channel downstream of access road.

Photo 18. Historical channel with ponded water.

Photo 19. Abandoned channel features in right overbank area.



Peshastin Creek (RM 8.4-9.2)
Photo Locations from 9/15/2015 Field Reconnaissance



Appendix B: Photos of 9/15/2015 Field Reconnaissance BRG Project Site
Peshastin Creek RM 8.4 to 9.2



Photo 1. Bridge crossing at Ingalls Creek Road near RM 8.4 (view downstream).



Photo 2. Active channel flanked by approximately 25 foot high bluff underlain by alluvial fan deposits upstream of the bridge at Ingalls Creek Road (view downstream). The road embankment for SR 97 confines the channel to the east.

Appendix B: Photos of 9/15/2015 Field Reconnaissance BRG Project Site
Peshastin Creek RM 8.4 to 9.2



Photo 3. Active channel near RM 8.7 flanked by the road embankment for SR 97 to the east and excavated spoils pile to the west (view downstream).



Photo 4. Excavated spoils pile in left overbank area flanking the active channel near RM 8.7.

Appendix B: Photos of 9/15/2015 Field Reconnaissance BRG Project Site
Peshastin Creek RM 8.4 to 9.2



Photo 5. Abandoned channel feature parallel to the active channel near RM 8.7 flanked by excavated spoils pile to the east and alluvial fan deposits from Hansel Creek to the west.



Photo 6. Terrace surface to the west of Peshastin Creek (RM 8.7-8.9).

Appendix B: Photos of 9/15/2015 Field Reconnaissance BRG Project Site
Peshastin Creek RM 8.4 to 9.2



Photo 7. Narrow floodplain surface approximately 40 feet wide along left bank near RM 8.7.



Photo 8. Active channel near RM 8.7 (view upstream).

Appendix B: Photos of 9/15/2015 Field Reconnaissance BRG Project Site
Peshastin Creek RM 8.4 to 9.2



Photo 9. Terrace surface along left bank near RM 8.8.



Photo 10. Active channel near RM 8.9 (view downstream).

Appendix B: Photos of 9/15/2015 Field Reconnaissance BRG Project Site
Peshastin Creek RM 8.4 to 9.2



Photo 11. Left bank near RM 8.9 with steep slope and eroding terrace just downstream of high bluff formed by glacial deposits.



Photo 12. Active channel confined by the SR 97 road embankment and a high glacial terrace near RM 9.

Appendix B: Photos of 9/15/2015 Field Reconnaissance BRG Project Site
Peshastin Creek RM 8.4 to 9.2



Photo 13. Confluence of Peshastin Creek with Ingalls Creek.



Photo 14. Historical channel disconnected by SR 97.

Appendix B: Photos of 9/15/2015 Field Reconnaissance BRG Project Site
Peshastin Creek RM 8.4 to 9.2



Photo 15. Historic channel partially blocked by fill pushed in from the area to the west between the old channel and SR 97.



Photo 16. Historical channel.

Appendix B: Photos of 9/15/2015 Field Reconnaissance BRG Project Site
Peshastin Creek RM 8.4 to 9.2



Photo 17. Historical channel downstream of access road.



Photo 18. Historical channel with ponded water.

Appendix B: Photos of 9/15/2015 Field Reconnaissance BRG Project Site
Peshastin Creek RM 8.4 to 9.2



Photo 19. Abandoned channel features in right overbank area.