






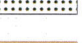
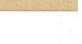
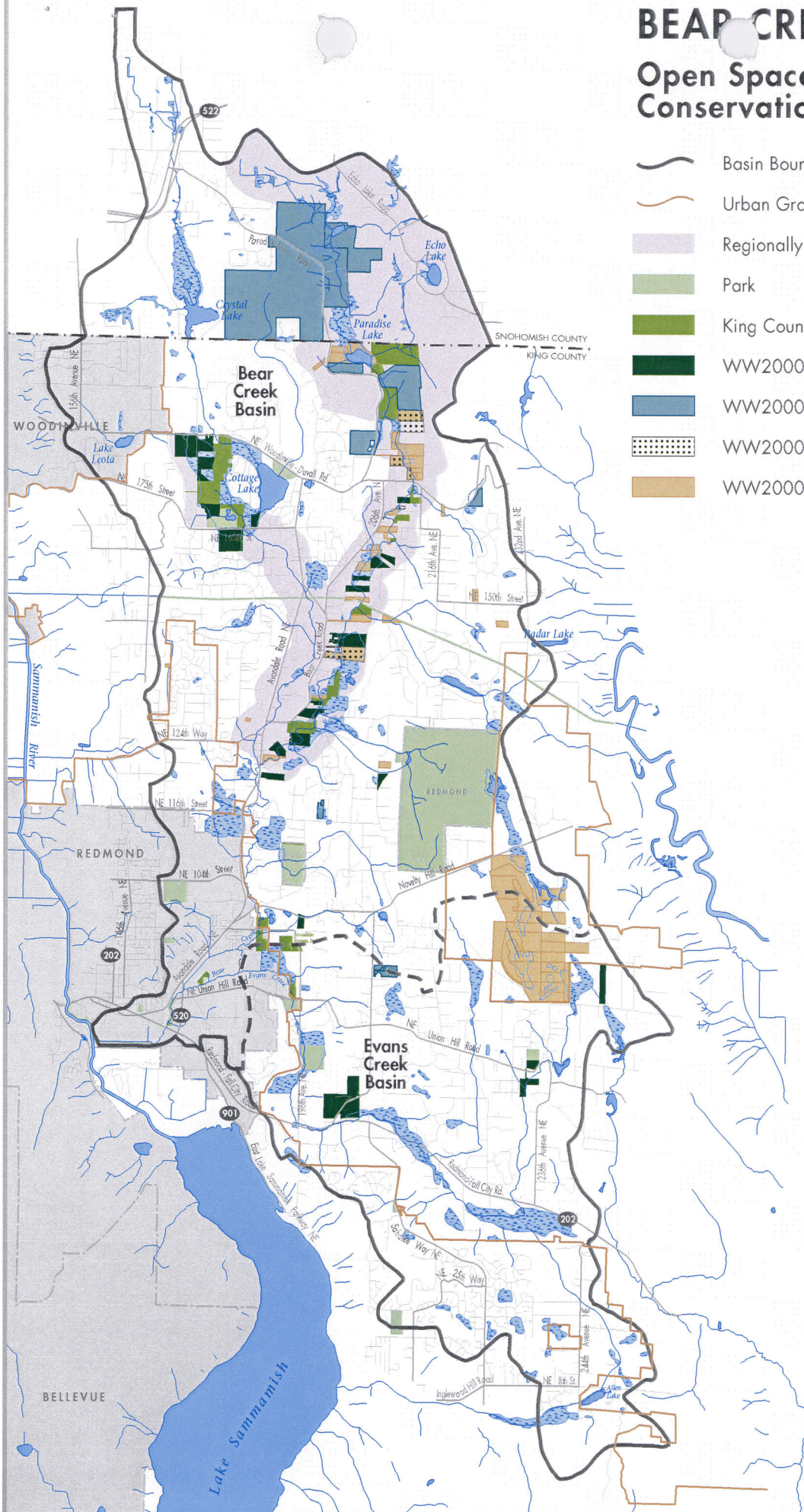


BEAR CREEK BASIN

Open Space, Park and Conservation Lands

-  Basin Boundary
-  Urban Growth Area Boundary
-  Regionally Significant Resource Area
-  Park
-  King County Park - WW2000 Purchased
-  WW2000 Open Space
-  WW2000 Property in Forest Taxation
-  WW2000 Property in Conservation Easement
-  WW2000 Property—Public Benefit Rating System



0 1 2 Miles
March 1998

Produced by King County DNR
Public Outreach Section
Visual Communications and GIS Unit
File: 9803bearOPENspace