

**Barnum Point Acquisition  
The Nature Conservancy  
ESRP Proposal Attachments**

**List of Attachments**

Attachment 1: Resumes for Project Leads

Attachment 2: Maps

- Project Area Map
- Parcel Map
- Habitat Map

Attachment 3: Site Photos

Attachment 4: WA Dept. of Ecology Aerial Photos

Attachment 5: Sediment Transport, Feeder Bluff and Nearshore Ecosystem Process Degradation Figures

Attachment 6: Conceptual Model

Attachment 7: Letters of Support

- Island County
- Whidbey Camano Land Trust
- Friends of Camano Island Parks
- Stillaguamish Tribe
- Tulalip Tribes
- Island County Marine Resources Committee
- Camano Action for a Rural Environment
- Alliance for Puget Sound Shorelines

Attachment 8: Evidence of Landowner Willingness

Attachment 9: References

## Attachment 1 – Resumes for Project Leads

### **Peter Scholes**

2114 NE Park Road  
Seattle, WA 98105  
206-527-4764  
[pscholes@tnc.org](mailto:pscholes@tnc.org)

Director of Protection  
The Nature Conservancy

### **Summary**

More than 20 years of experience conducting conservation real estate transactions, including prominent Puget Sound nearshore projects in Snohomish, Island, San Juan, Kitsap and Pierce counties.

### **Experience**

2000-present Director of Protection, The Nature Conservancy. Responsible for all Conservancy land transactions in Washington State.

2000-2002 President, Washington Wildlife and Recreation Coalition (volunteer).

1999-2000 Director of Agency Relations, The Nature Conservancy. Responsibility included input to Salmon Recovery Funding Board on start up issues.

1990-1996 City of Seattle, Open Space Program Oversight Committee (Mayoral appointment).

1990-1999 Senior Project Manager in Washington State, Trust for Public Land.

1989 City of Seattle. Study of surplus land ownership and disposition policies.

1982-1988 Property Management Officer, Municipality of Anchorage, Alaska. Initially appointed by Mayor to develop a management program for land granted from the State, later directed the Real Estate Services division.

1976-1980 Alaska Program Manager, The Wilderness Society (TWS). Initially as first TWS employee in Alaska, then in Washington D.C. as lobbying coordinator for the Alaska National Interest Land Conservation Act.

1974-1976 Various staff positions in Alaska including staff for the Anchorage Federation of Community Councils, Alaska Center for Environment, and Commissioner of Highways.

### **Education**

1974 Bachelor of Arts (honors), University of California, Santa Cruz.

## Attachment 1 – Resumes for Project Leads

**Kat Morgan**

(360) 419-7059

kmorgan@tnc.org

### Education

M.S., Human Dimensions of Natural Resource Management. Colorado State University, 2005.

B.S., Natural Resources. Cornell University, 2000.

### Experience

#### **Port Susan Bay Program Manager**

**January 2009 – present**

The Nature Conservancy, Mount Vernon, WA

Responsible for planning and implementation of landscape-scale conservation efforts in the Port Susan Bay conservation area. Identifies, secures funding, and implements habitat protection and restoration projects, including final design and permitting for the Port Susan Bay Estuary Restoration Project and proposal development and conceptual design of the Livingston Bay Pocket Estuary Restoration Project. Oversees all aspects of on-the-ground conservation efforts, preserve management, and partner and community relations. Serves as TNC representative on pertinent organizational, agency planning, advisory, and recovery teams.

#### **Stewardship Manager**

**July 2006 – January 2009**

The Nature Conservancy, Mount Vernon, WA

Managed TNC's Port Susan Bay *Spartina* Control Program, including grant proposal development, budget management, planning, hiring, development and coordination of agency partnerships. On the ground management of the Port Susan Bay Preserve, including visitor management, volunteer coordination, infrastructure maintenance, and control of non-native species. Managed restoration project to restore connectivity to an off-channel wetland on the South Fork of the Skagit River, including baseline monitoring program, RFP, bidding and contractor selection for feasibility analysis and preliminary design.

#### **Preserve Steward**

**June 2005 – July 2006**

The Nature Conservancy, Mount Vernon, WA

Supported scientists on the Northwest Estuary Project, including data collection, equipment maintenance, and reporting. Developed *Spartina* control program at Port Susan Bay, including monitoring and completion of *Spartina* treatment experiment. Coordinated shorebird monitoring program at Port Susan Bay.

#### **Research and Teaching Assistant**

**September 2002 – May 2005**

Human Dimensions of Natural Resource Management Dept., Colorado State University, Fort Collins, CO

Led development and implementation of qualitative, interview-based project to identify and map the social landscape of the Pawnee National Grassland in anticipation of NEPA-process to re-define management of high-profile uses of the USFS unit. Teaching assistance for Protected Areas Management, Landscape Planning, and Recreation Theory undergraduate courses, including lectures, course coordination, student teaching, exam development and grading, etc.

#### **Ives Road Fen Outreach and Restoration Coordinator**

**March 2001 – December 2001**

The Nature Conservancy, Adrian, MI

Oversaw Ives Road Fen wetland restoration project, including restoration of natural hydrologic regime, native species release through invasive glossy buckthorn removal, native plant propagation and planting, and seasonal controlled burning. Monitored restoration success and effectiveness of control efforts.

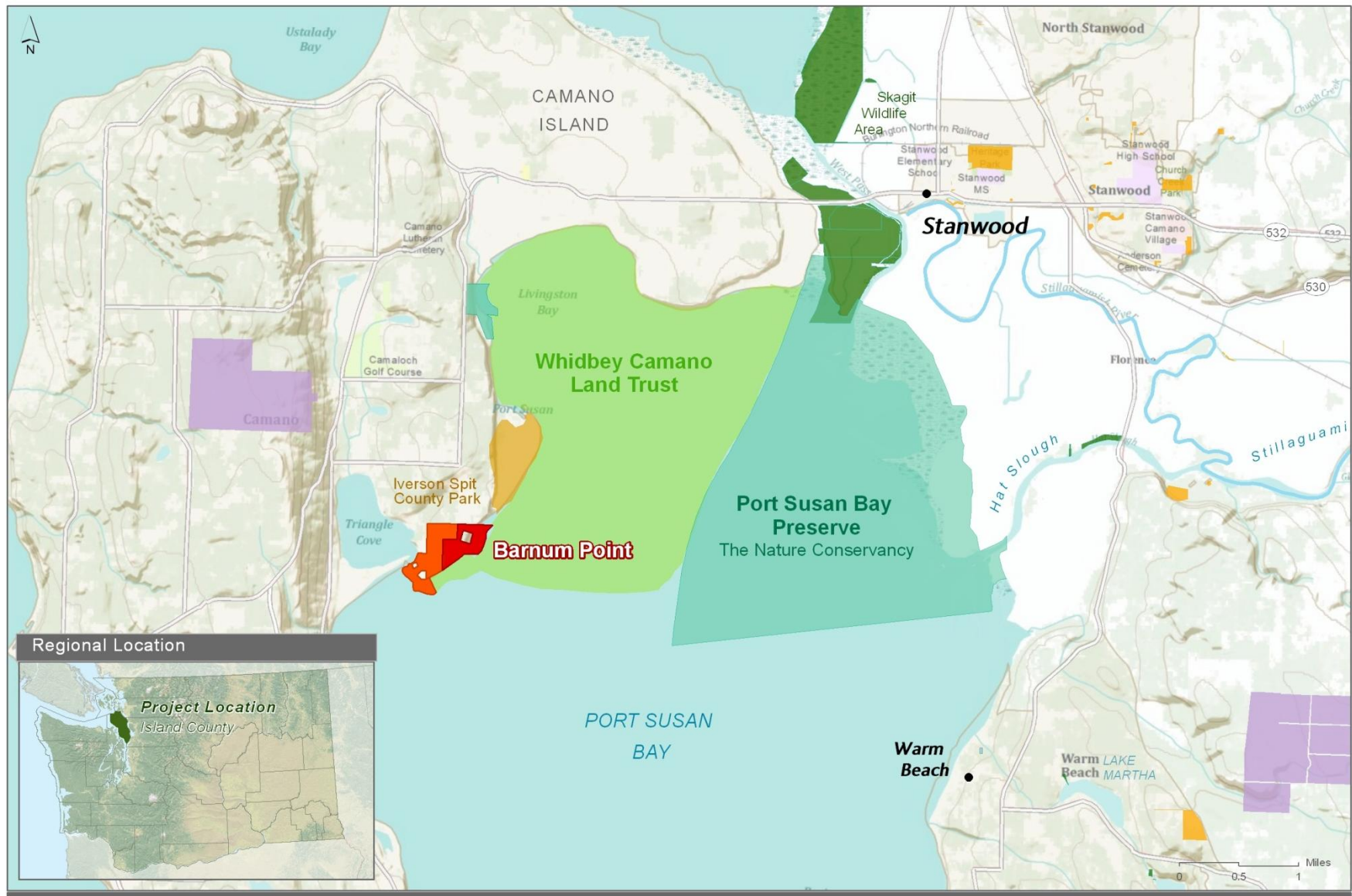
#### **Stewardship Specialist**

**June 2000 – September 2001**

The Nature Conservancy, Colorado Springs, CO

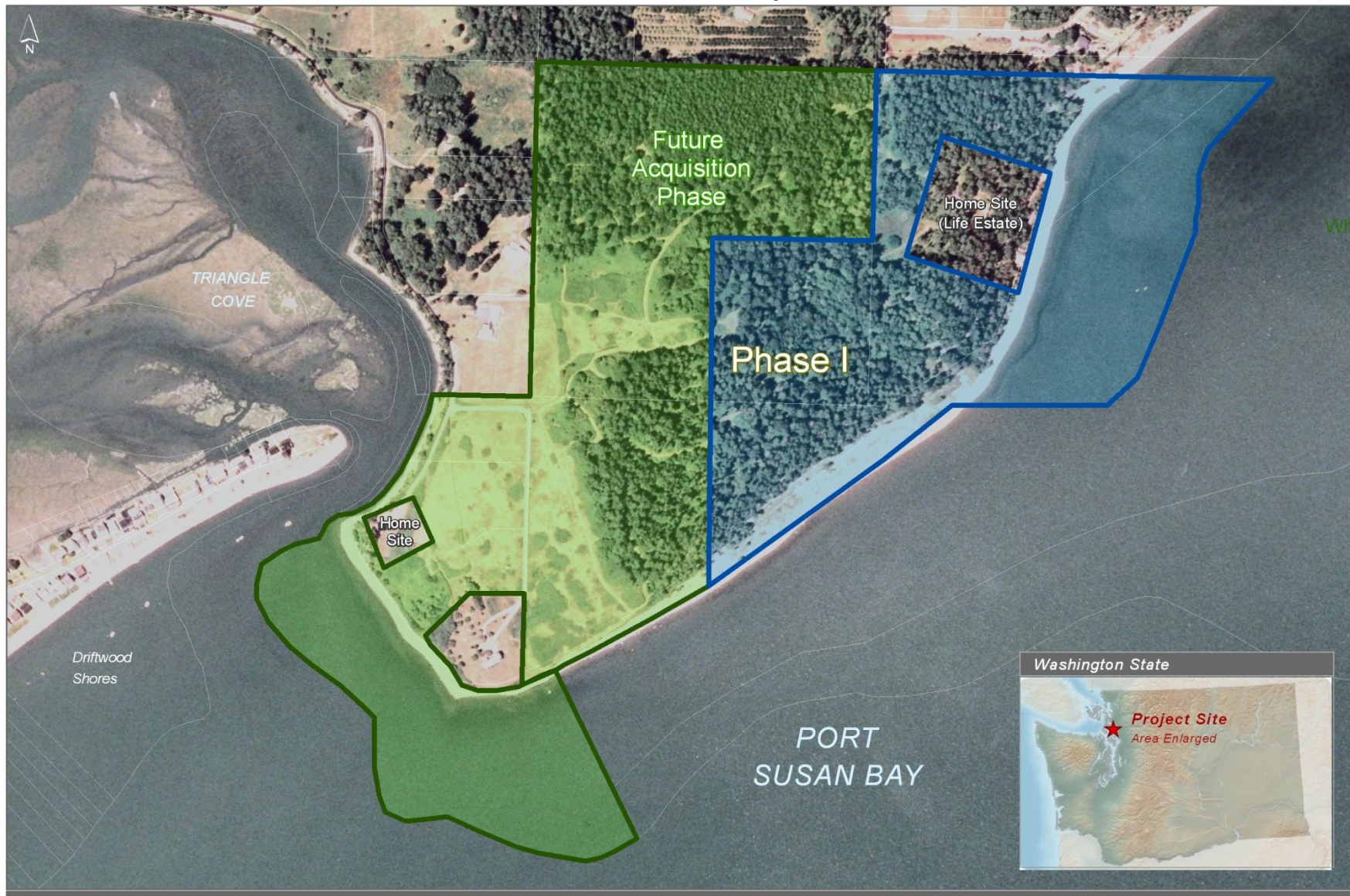
Managed high volume (100/week) volunteer program working on salt cedar removal, developed a sense-of-place workshop for teachers, and wrote a natural and cultural history of the of the Bohart Ranch Preserve, a 41,000 acre working cattle ranch in Colorado's sand sage prairie.

## Attachment 2 – Maps



### Barnum Point Acquisition Protected Lands in Project Vicinity

## Attachment 2 – Maps



### Barnum Point Acquisition Parcel Map

0 250 500 Feet

- PROPOSED PHASE I ACQUISITION
- FUTURE ACQUISITION PHASE
- PARCELS

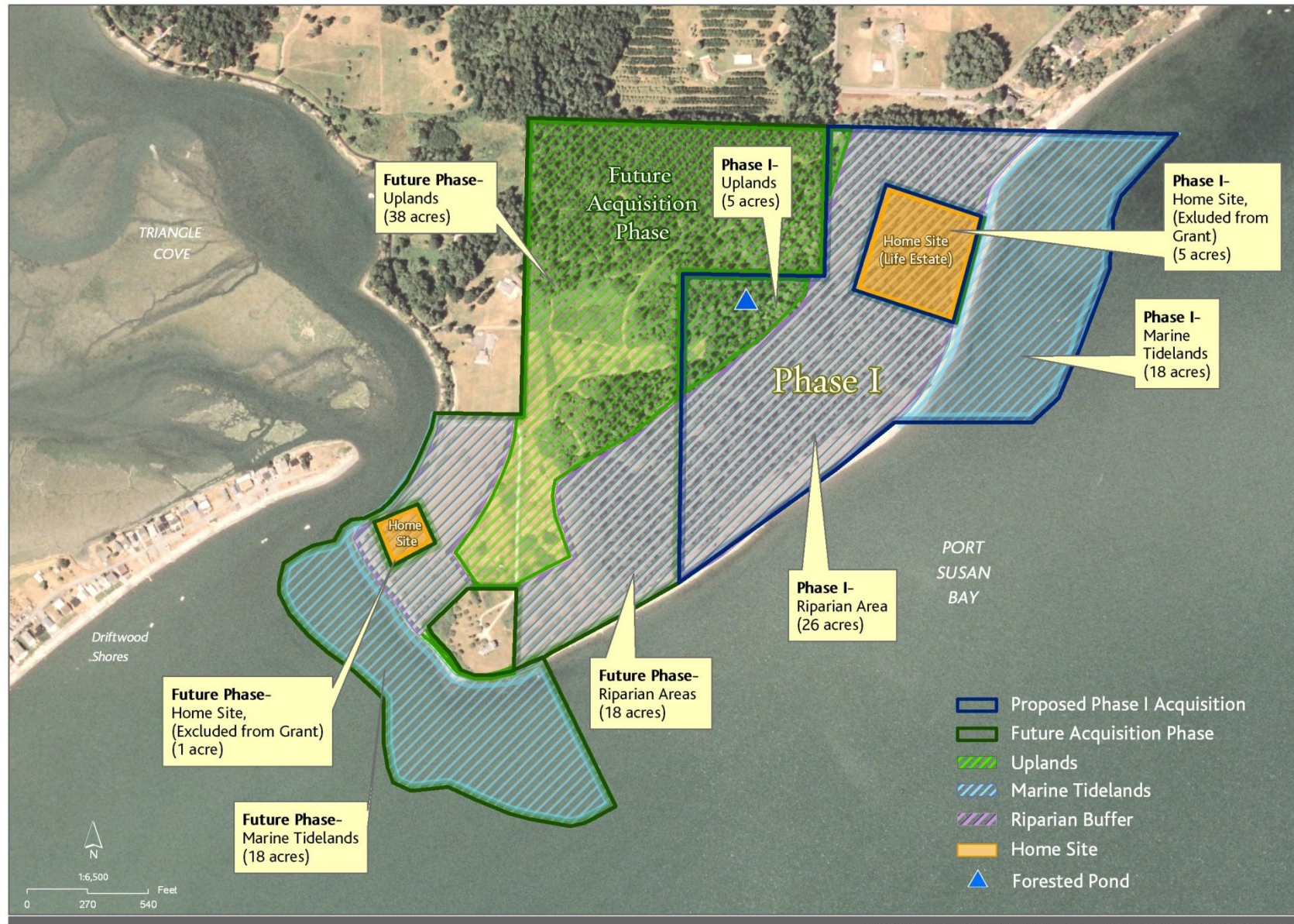
The Nature Conservancy  
Protecting nature. Preserving life.™



K:\USAWashington\PugetSound\1 Maps\PortSusanBay\PortSusanBay\_BarnumPortSiteMap\_20101012\_B.5x11.mxd

## Attachment 2 – Maps

### Barnum Point Acquisition Habitat Map



### Attachment 3 – Site Photos



Looking east from Driftwood Shores across Barnum Point and Port Susan Bay.



Looking west across Barnum Point and Triangle Cove.



Looking southwest across Barnum Point.

All photos © Benjamin Drummond / LightHawk



Exceptional feeder bluff on east shore of Barnum Point.

### Attachment 3 – Site Photos



Barnum Point's feeder bluffs supply sediment for the 3-mile drift cell that extends north into Livingston Bay. They also provide sediment to Triangle Cove, an important pocket estuary west of Barnum Point. Marine riparian forest along the bluff-top provides nesting, perching and roosting habitat for a variety of raptors.

### Attachment 3 – Site Photos



The tidelands surrounding Barnum Point include cobble, gravel and sandy beaches—all maintained by the actively eroding bluffs. These tidelands include documented forage fish spawning sites as well as areas identifies as suitable for forage fish spawning. Juvenile salmon and a variety of shorebirds and waterfowl forage in the nearshore.

### Attachment 3 – Site Photos



© Benjamin Drummond

Bald eagle foraging on tidelands off Barnum Point.



© Benjamin Drummond

Eelgrass beds, while not located within the area to be purchased, will benefit from protection of the sediment source.



© Melinda Milner/TNC

Marine riparian forest on Barnum Point.



© Benjamin Drummond

A network of trails maintained by the current landowner provide easy access through the uplands.

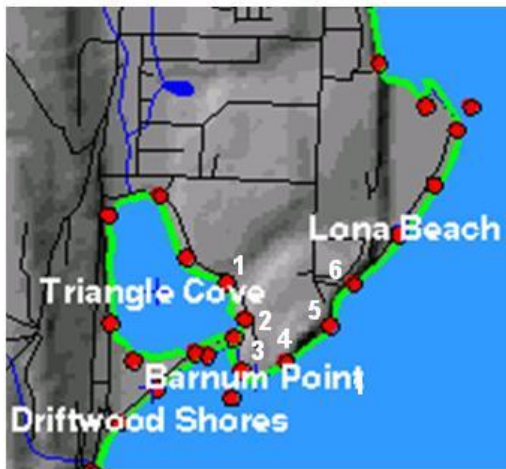
### Attachment 3 – Site Photos



The long-term vision for Barnum Point is protection and management as an Island County park. Passive, nature-based recreation will allow visitors to enjoy the stunning views, explore the beaches and wander through forested paths, while protecting the habitats and ecological processes that make Barnum Point essential to the long-term protection of Port Susan Bay.

All photos © Benjamin Drummond

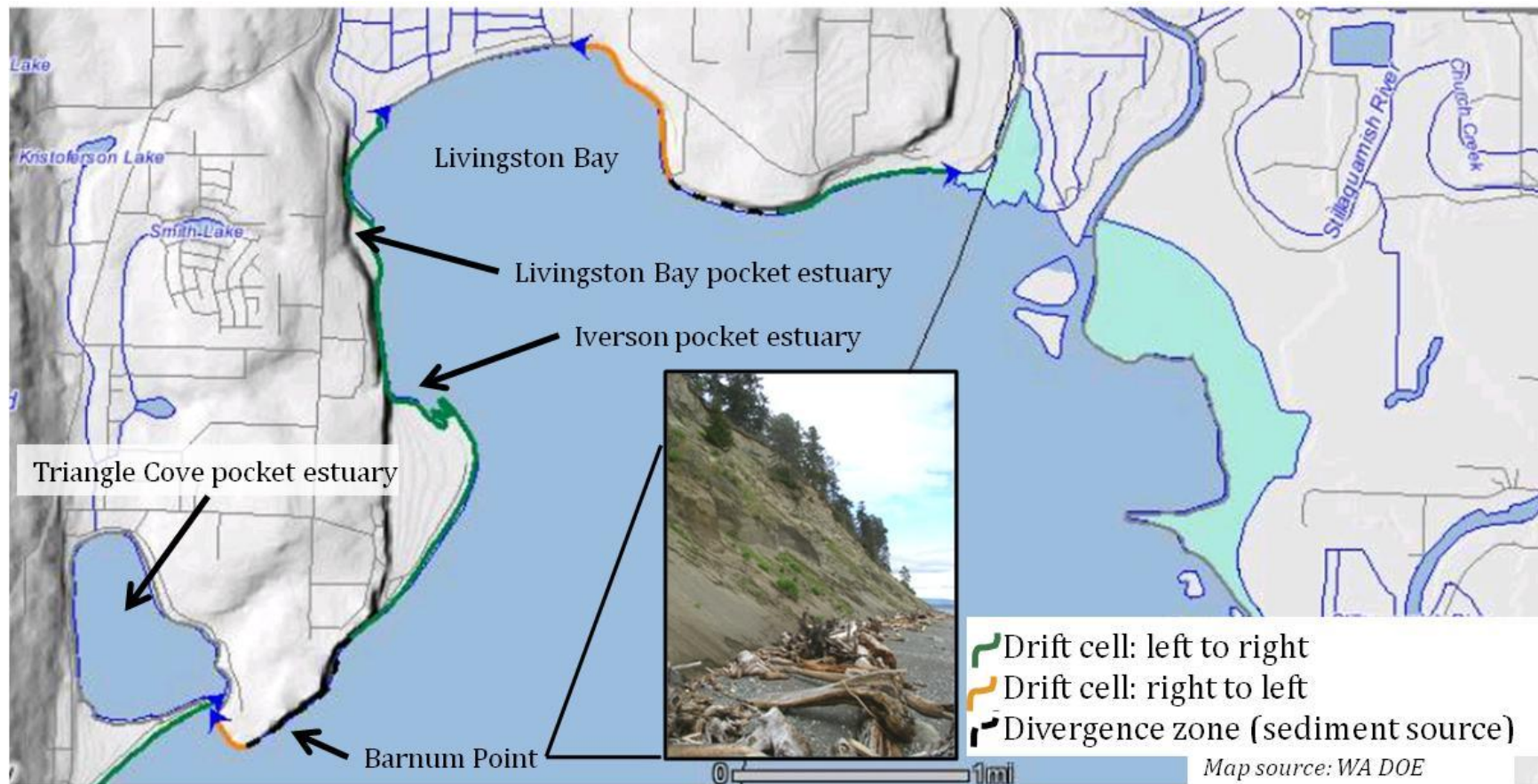
## Attachment 4 – WA Dept. of Ecology Aerial Photos



Aerial photos courtesy of Washington Dept. of Ecology  
<http://apps.ecy.wa.gov/shorephotos/index.html>

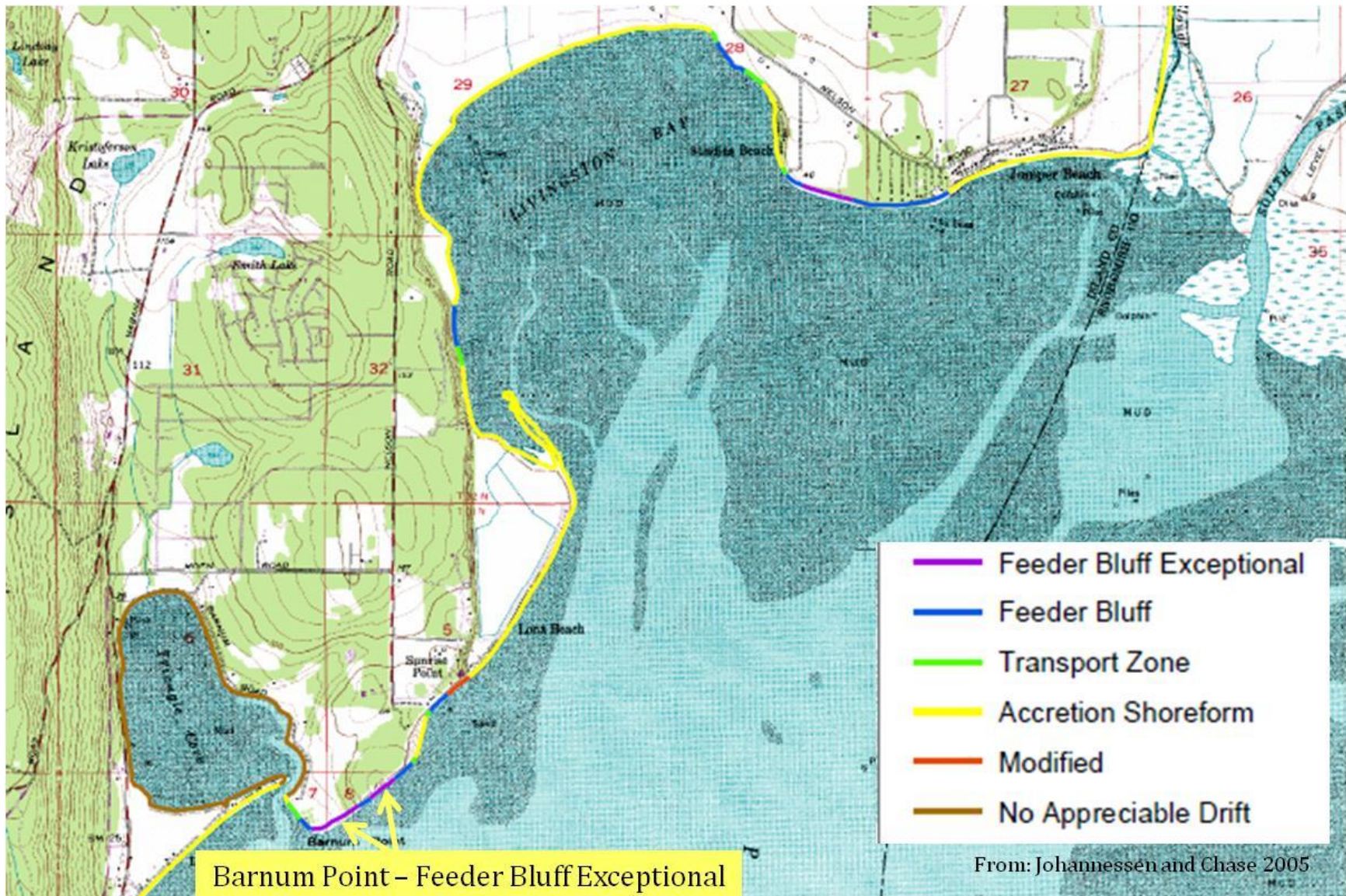


## Attachment 5 – Sediment Transport, Feeder Bluff and Nearshore Ecosystem Process Degradation Figures



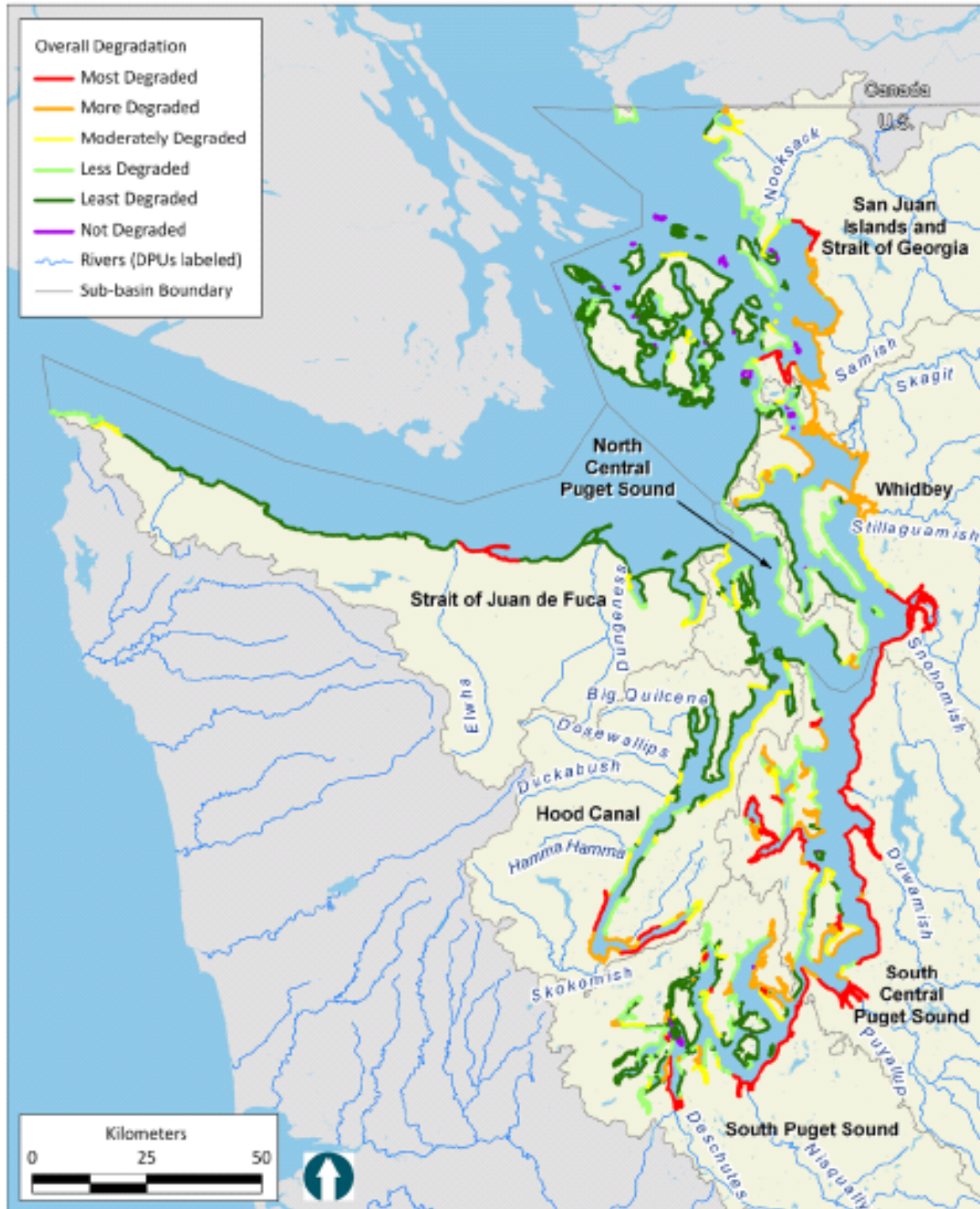
Barnum Point is a divergence zone which supplies sediment west to Triangle Cove and north to Livingston Bay. Sediment from Barnum Point maintains the spits that protect Iverson and Livingston Bay (Nelson) pocket estuaries.

## Attachment 5 – Sediment Transport, Feeder Bluff and Nearshore Ecosystem Process Degradation Figures



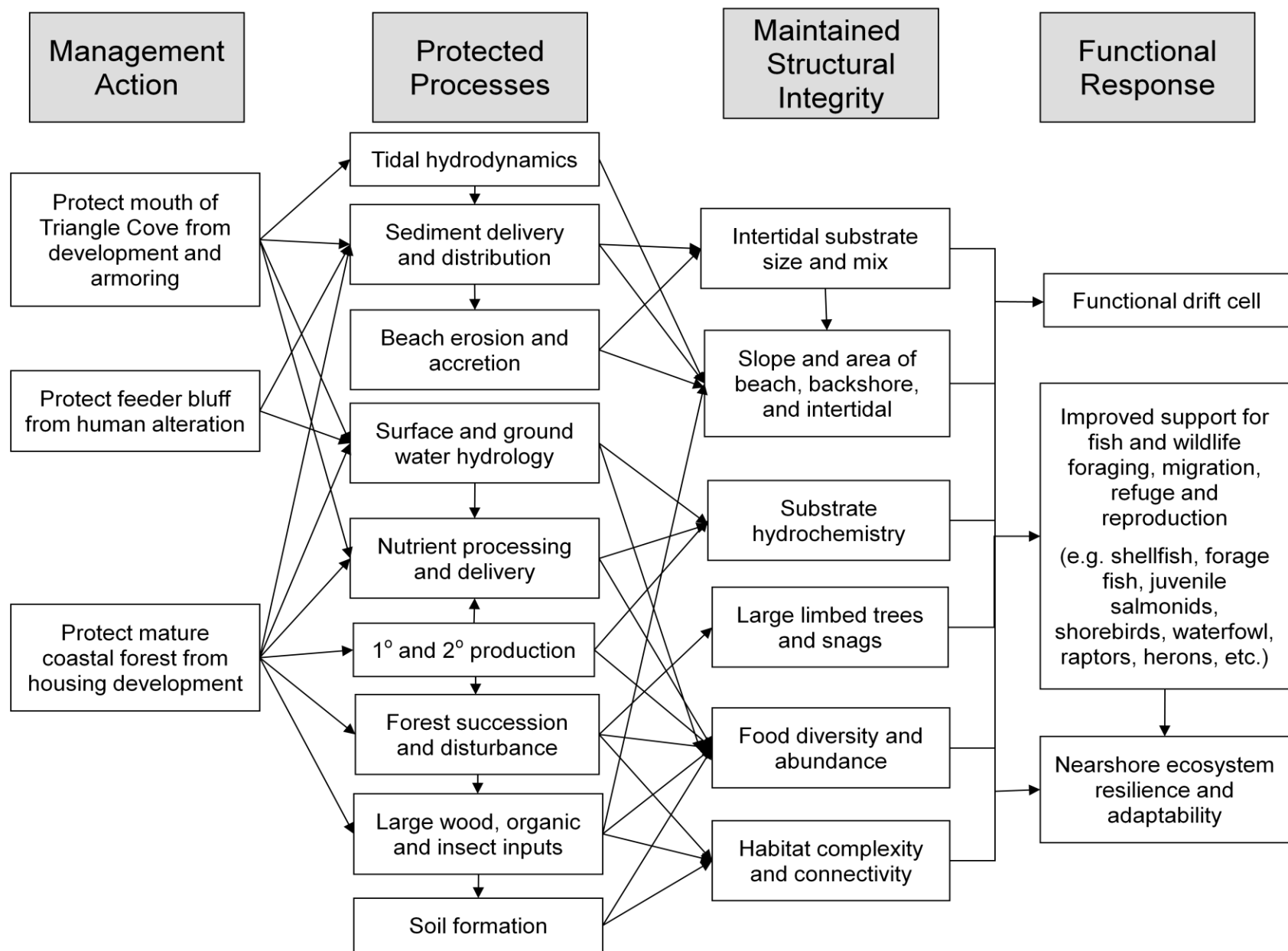
The bluffs at Barnum Point are one of only two sites classified as “feeder bluff exceptional” in Port Susan Bay.

## Attachment 5 – Sediment Transport, Feeder Bluff and Nearshore Ecosystem Process Degradation Figures



PSNERP overall nearshore process degradation rankings for Puget Sound. The project area is identified as “less degraded.” [Schlenger et al. 2010]

## Attachment 6 – Conceptual Model



## Attachment 7 – Letters of Support

### ISLAND COUNTY PUBLIC WORKS DEPARTMENT

P.O. Box 5000  
Coupeville, WA 98239-5000



### PUBLIC WORKS

Phone: 360/679-7331  
From Camano: 360/629-4522  
From S. Whidbey: 360/321-5111  
FAX: 360/678-4550

William E. Oakes, P.E., Director/County Engineer    Steve Marx, Assistant Director    Randall C. Brackett, P.E., Asst. County Engineer

October 15, 2010

Re: Barnum Point Acquisition Project

To Whom it May Concern,

The Island County Parks and Recreation Department is pleased to provide this letter of support regarding the Barnum Point Acquisition Project.

The project being proposed will have long-lasting benefits to the people of Island County. It will protect the sensitive marine and nearshore systems in Port Susan and will eventually provide outstanding opportunities for public access, outreach, and education as an Island County Park. This project directly aligns with public interests in Island County, as documented in the public involvement research conducted for an update to the County Comprehensive Parks Plan during the summer of 2010. Though the plan update is slated for completion in December 2010, our initial research has shown that 91% of our respondents indicated that conserving habitat and natural areas is important or very important. Two of the three highest priorities from our respondents for conservation included shoreline conservation areas and public access to water. This project also has the support of Island County's Board of Commissioners, who voted in February 2010 to work with the Nature Conservancy in pursuit of project fundraising.

We also recognize this project's contribution to the larger collaborative effort to restore and protect Northern Port Susan Bay and the Stillaguamish River estuary. We believe that the partnership between Island County, Whidbey Camano Land Trust and The Nature Conservancy will lead to the highest standards of management and stewardship of the project site as well as the larger conservation area. Future development of the site as a low-impact Island County day-use park will enrich and engage the local community through recreation, education and stewardship of this special place.

Sincerely,

WILLIAM E. OAKES, P.E.  
Director / County Engineer

## Attachment 7 – Letters of Support



July 8, 2010

Bill Oakes  
Island County Director of Public Works  
P.O.Box 5000  
Coupeville, WA 98239-5000

Re: Barnum Point Protection Project

Dear Mr. Oakes,

I am pleased to provide this letter of support regarding the Barnum Point Protection project.

The Barnum Point Protection project being proposed by Island County is a rare opportunity on Camano Island to protect and provide public access to a 120-acre forested shoreline property with a mile of intact shoreline. The project aligns strongly with Whidbey Camano Land Trust's conservation efforts on Camano Island.

The project fulfills protection recommendations outlined in multiple local and regional species recovery, conservation, and management plans. This project will implement priority actions identified in the *Multi-species Salmon Recovery Plan for WRIA 6* (Island County 2005). It is specifically identified in the WRIA 6 three-year implementation plan.

The project also builds upon years of successful conservation efforts by Whidbey Camano Land Trust, The Nature Conservancy, and other partners in Port Susan Bay and the Stillaguamish Delta. Barnum Point is adjacent to over 7,100 acres of protected tidelands and estuarine wetlands, and this site will strongly complement the significant investments in landscape-scale conservation that have already been made at Port Susan Bay.

Please contact Chris Hilton at (360) 222-3310 if you have additional questions.

Sincerely,

A handwritten signature in black ink, appearing to read "Patricia Powell", written over a horizontal line.

Patricia Powell  
Executive Director

(360) 222-3310 phone  
(360) 222-3510 fax  
780 Worm Road  
Box C-201  
Greenbank, WA 98253  
www.wcdt.org

Protecting our island's most important lands in partnership with the broader community

© 2006 WCDT

## Attachment 7 – Letters of Support



# FRIENDS OF CAMANO ISLAND PARKS

June 10, 2010

The Nature Conservancy Skagit River Office  
410 N. 4<sup>th</sup> St.  
Mount Vernon WA 98273

Re: Barnum Point Acquisition Project

To Whom it May Concern,

The Friends of Camano Island Parks (FOCIP) Board of Directors is pleased to provide this letter of support regarding the Barnum Point Acquisition Project.

Friends of Camano Island Parks' mission includes "...to advocate for acquisition of appropriate Camano Island Property, ...to help promote preservation and protection of the wildlife, ...and to assist with stewardship activities which would include implementation of park improvements, maintenance, and education programs compatible in a natural area." This acquisition will further these goals.

The Barnum Point Acquisition Project being proposed will have long-lasting benefits to the wildlife and people of Camano Island through habitat protection, public access to shoreline and forest trails, and environmental education. This project will permanently protect high functioning intertidal, shoreline and marine riparian habitats. These habitats are all vital parts of the estuary and nearshore system in Port Susan Bay. Barnum Point will also allow for increased public access to Camano Island shoreline, and increased opportunities for our Island residents to learn about the importance of the natural processes that sustain our beaches, and support the plethora of birds, fish, and other wildlife that enrich our lives. This project also has a strong connection to Iverson Spit County Park, where FOCIP is very active. The feeder bluffs of Barnum Point are constantly supplying sediment that sustains the sandy beaches of Iverson Spit.

We also recognize this project's contribution to the larger collaborative effort to restore and protect Northern Port Susan Bay and the Stillaguamish River estuary. We believe that the partnership between Island County, Whidbey Camano Land Trust and The Nature Conservancy, with support from FOCIP, will lead to the highest standards of management and stewardship of the project site as well as the larger conservation area. Future development of the site as a low-impact Island County day-use park will enrich and engage the local community through recreation, education and stewardship of this special place.

Sincerely,

  
Carol Triplett, Pres/Co chair

  
Tom Eisenberg, Co-Chair

A Volunteer Organization Serving Camano Island Parks, P. O. Box 1385, Stanwood, WA, 98282

## Attachment 7 – Letters of Support



# Stillaguamish Tribe

## Natural Resources Department

---

July 8, 2010

Bill Oakes  
Island County Director of Public Works  
P.O.Box 5000  
Coupeville, WA 98239-5000

Re: Barnum Point Protection Project

Dear Mr. Oakes

I am pleased to provide this letter of support on behalf of the Stillaguamish Tribe regarding Island County's Barnum Point Protection project.

The Barnum Point Protection project proposed by Island County (with support from The Nature Conservancy and Whidbey Camano Land Trust) contributes to salmon recovery in Puget Sound by protecting high functioning feeder bluff, marine riparian, and tideland habitats and will allow for the opportunity to educate the public in the habitat requirements of salmon in the nearshore. The tribe has four years of sampling data that indicate the habitats this project will protect, and the adjacent area of Triangle Cove, are used extensively by juvenile salmon as they prepare to enter the ocean. Our data also indicates that salmon originating from a number of north Puget Sound watersheds including the Skagit, Stillaguamish, and Snohomish use habitats around Whidbey and Camano Islands. The project is specifically identified in the WRIA 6 (Whidbey and Camano Island) Multi-Species Salmon Recovery Plan's three-year implementation matrix.

In addition, we recognize this project's contribution to the larger collaborative effort to restore and protect north Port Susan Bay and the Stillaguamish River estuary. This project will protect relatively rare habitats that are critical for maintaining functionality of the over 7,000 acres of diverse estuarine and nearshore habitats already under protection. Protecting and restoring salmon habitat is of vital interest to the Stillaguamish Tribe, as we have not had a directed Chinook fishery in more than 13 years. Our work indicates that habitat loss is driving the poor returns of Stillaguamish Chinook, coho, and chum. For the tribe's treaty protected fishing rights to meaningfully exist, and for our culture to be sustained, we need harvestable numbers of salmon (esp. Chinook) to return to the Stillaguamish River. The Barnum Point Protection project will help towards that end.

Sincerely,



Shawn Yancy  
Tribal Chairman and Fisheries Manager  
Stillaguamish Tribe

---

22712 4<sup>th</sup> Avenue NE  
360 435 2755

Arlington WA 98223  
Fax: 360 435 3805

PO Box 277  
Seat: 425 257 1628

## Attachment 7 – Letters of Support



### THE TULALIP TRIBES

**Board of Directors:**

Mel Sheldon - Chairman  
Marlin J. Fryberg, Jr., *Serviss* – Vice-Chairman  
Chuck James - Treasurer  
Marie Zackuse, Secretary  
Don Hatch, Jr. –*Spat-ub-kud*, Board Member  
Glen Gobin - Board Member  
Mark Hatch, Board Member  
Paula Cortez - General Manager

8408 Marine Drive  
TULALIP, WA 98271-9894  
(360) 716-4000  
FAX (360) 651-4032

The Tulalip Tribes are the  
successors in interest to  
the Snohomish,  
Snoqualmie, and  
Skykomish tribes and other  
tribes and band signatory  
to the Treaty of Point Elliott

July 2, 2010

Bill Oakes  
Island County Director of Public Works  
P.O.Box 5000  
Coupeville, WA 98239-5000

Re: Barnum Point Protection Project

Dear Mr. Oakes

I am pleased to provide this letter of support on behalf of the Tulalip Tribes' Natural and Cultural Resources Department regarding the Barnum Point Protection project.

The Barnum Point Protection project proposed by Island County, with support from The Nature Conservancy and Whidbey Camano Land Trust, contributes to salmon recovery in Puget Sound by protecting high functioning feeder bluff, marine riparian, and tideland habitats. The Barnum Point Project will also preserve and maintain connectivity with an important pocket estuary at Triangle Cove, located directly to the west, and maintain sediment sources for Iverson Spit, also a pocket estuary, to the North. Triangle Cove, Iverson Spit, Barnum Point and nearshore habitat throughout Camano and Whidbey Islands are vital habitat for juvenile salmon rearing and acclimation to marine waters from the three rivers in the Whidbey Basin, the Skagit, Stillaguamish, and Snohomish.

The Tulalip Tribes, along with its many partners including Island County, The Nature Conservancy, and Whidbey Camano Land Trust, recognize that significant improvements in the protection and restoration of salmon habitat are needed to recover the federally listed Chinook salmon. In addition we recognize the contribution that this project makes to the collaborative effort underway to restore and protect the Port Susan ecosystem.

We are confident that Island County in partnership with The Nature Conservancy and The Whidbey Camano Land Trust will lead to the highest standards of management and stewardship of the project site as well as the larger conservation area. The Tulalip Tribes is committed to working with Island County, The Nature Conservancy and the Whidbey Camano Land Trust as needed to ensure the protection of this important marine area. Again, the Tulalip Tribes fully support the Barnum Point Protection Project.

Sincerely,

  
Terry Williams  
Fisheries & Natural Resources Commissioner  
Tulalip Tribes Natural and Cultural Resources Department

## Attachment 7 – Letters of Support



ISLAND COUNTY MARINE RESOURCES COMMITTEE  
[www.islandcountymrc.org](http://www.islandcountymrc.org)

c/o WSU Extension, Island County  
PO Box 5000  
Coupeville, WA 98239

Re: Barnum Point Acquisition Project

October 19, 2010

To Whom it May Concern,

The Island County Marine Resource Committee (MRC) is pleased to provide this letter of support on behalf of the project sponsors regarding the Barnum Point Acquisition Project.

The project being proposed will have long-lasting benefits to the sensitive marine and nearshore systems in Port Susan and will eventually provide outstanding opportunities for public access, outreach, and education as an Island County Park. This project directly aligns with the MRC's strategic planning goal to "Protect intact ecosystem processes, structures and functions in support of the Northwest Straits Commission benchmarks and the Puget Sound Partnership Action Agenda." The Barnum Point acquisition project will permanently protect high functioning intertidal, shoreline and marine riparian habitats, including a mile of intact shoreline and an exceptionally active feeder bluff. These habitats are all vital parts of the estuary and nearshore system in Port Susan Bay. Barnum Point will also allow for increased public access to the Camano Island shoreline, and increased educational opportunities to measurably raise community awareness of marine systems and their issues.

We also recognize this project's contribution to the larger collaborative effort to restore and protect Northern Port Susan Bay and the Stillaguamish River estuary. We believe that the partnership between Island County, Whidbey Camano Land Trust and The Nature Conservancy, with support from the MRC will lead to the highest standards of management and stewardship of the project site as well as the larger conservation area. Future development of the site as a low-impact Island County day-use park will enrich and engage the local community through recreation, education and stewardship of this special place.

Thank you for your time. I can be reached through the WSU Extension office should you have any questions.

Sincerely,

Joe Hillers  
Vice Chair,  
Island County Marine Resource Committee

## Attachment 7 – Letters of Support



**C. A. R. E.**  
Camano Action for a Rural Environment  
PO Box 1742  
Starwood, WA 98292  
[www.CamanoCare.org](http://www.CamanoCare.org)

---

June 11, 2010

Re: Barnum Point Acquisition Project

To Whom It May Concern,

Camano Action for a Rural Environment (C.A.R.E.) is pleased to provide this letter of support on behalf of Island County regarding their Barnum Point Acquisition Project.

The Barnum Point Acquisition Project being proposed will have long-lasting benefits to the wildlife and people of Camano Island through habitat protection, public access to shoreline and forest trails, and environmental education. Due to its unique location and relationship to Triangle Cove and Iverson Spit, this project will permanently protect high functioning intertidal, shoreline and marine riparian habitats, as well as important geological processes to the western shore of Port Susan Bay. These habitats and the processes that sustain them are all vital parts of the estuary and nearshore system that supports endangered Chinook salmon and forage fish spawning areas. On the human side, public access to shoreline areas is limited on Camano, and Barnum Point will also allow for increased low impact public access to Camano Island shoreline, along with increased opportunities for our Island residents to learn about the importance of the natural processes that sustain our beaches, and support the plethora of birds, fish, and other wildlife that enrich our lives. This project also has a strong connection to Iverson Spit County Park, where C.A.R.E. members and Camano residents regularly walk and experience the beauty of Port Susan Bay. The feeder bluffs of Barnum Point are constantly supplying sediment that sustains the sandy beaches of Iverson Spit.

We also recognize this project's contribution to the larger collaborative effort to restore and protect Northern Port Susan Bay and the Stillaguamish River estuary. C.A.R.E. has been concerned in recent years with the potential development of this property, which is located in such a fragile and key location. We are pleased to see this partnership between Island County, Whidbey Camano Land Trust and The Nature Conservancy and believe these organizations have a demonstrated track record for the highest standards of management and stewardship of similar project sites in the larger conservation area. Future development of this unique site as a low-impact Island County day-use park will enrich and engage the local community through recreation, education and stewardship of this special place.

Sincerely,

Allison Warner, President  
Camano Action for a Rural Environment

---

Protect our Water \* Encourage Responsible Development \* Save our Trees \* Practice Good Stewardship

## Attachment 7 – Letters of Support

October 15, 2010

Betsy Lyons  
Estuary and Salmon Restoration Program Manager  
Washington Department of Fish & Wildlife  
P.O. Box 43143  
Olympia, Washington 98504



*The Alliance for*  
**Puget Sound Shorelines**  
PEOPLE FOR PUGET SOUND • THE TRUST FOR PUBLIC LAND • THE NATURE CONSERVANCY

Re: Barnum Point Acquisition Project

Dear Ms. Lyons,

The Alliance for Puget Sound Shorelines is pleased to write this letter in support of an application by The Nature Conservancy, in partnership with Island County, to the Washington Department of Fish and Wildlife's Estuary and Salmon Restoration Program for the protection of a priority shoreline property on Port Susan Bay. Directly adjacent to more than 7,100 acres of estuarine and nearshore habitat already in conservation ownership, acquisition of Barnum Point will protect key ecological processes that sustain the larger Port Susan Bay system while providing excellent opportunities for public access.

The Alliance envisions Puget Sound's shorelines to be healthy, vibrant, clean and full of life. We also envision a Sound that can be easily reached and enjoyed by people, with more parks and natural areas for generations of families to experience and appreciate. And, we envision a civic and political leadership fully committed to the Sound's health and vitality. Puget Sound is renowned in our communities and across the country as a vibrant inland sea, a national model for how people—driven by commitment, pride and vision—can make a profound and lasting contribution on behalf of a landscape they love. Achieving this vision is the driving force behind the goals of the Alliance for Puget Sound Shorelines. The ultimate Barnum Point project vision to protect this visually stunning and ecologically critical area as an Island County park directly contributes to these goals. We look forward to contributing to this important effort.

Sincerely,

A handwritten signature in cursive script that reads "Karen L. Anderson".

Karen Anderson  
Washington State Director  
The Nature Conservancy

A handwritten signature in cursive script that reads "Roger Hoesterey".

Roger Hoesterey  
Director, West Division  
The Trust for Public Land

A handwritten signature in cursive script that reads "Kathy Fletcher".

Kathy Fletcher  
Executive Director  
People For Puget Sound

## Attachment 8 – Evidence of Landowner Willingness

### Landowner Information

Name of Landowner: Edward L. Stay, representing himself and family members who are co-owners.

Landowner Contact Information:

☒ Mr. ☐ Ms.

First Name: Edward Last Name: Stay

Contact Mailing Address: 289 S. Sunrise Blvd., Camano Island, WA 98282

Contact E-Mail Address: [sasds1@nwlink.com](mailto:sasds1@nwlink.com)

Property Address or Location: Barnum Point on Port Susan Bay (see Mailing Address)

I certify that Edward L. Stay (Landowner) is the legal owner of property described in this grant application to the Estuary and Salmon Restoration Program (ESRP). I am aware the project is being proposed on my property. My signature authorizes the applicant listed below to seek funding for project implementation, however, does not represent authorization of project implementation.

Edward L. Stay

October 14, 2010

Landowner Signature

Date

### Project Applicant Information

Project Name: Barnum Point Acquisition

Project Applicant Contact Information:

☒ Mr. ☐ Ms. Title: Director of Protection

First Name: Peter Last Name: Scholes

Mailing Address: The Nature Conservancy, 1917 First Avenue, Seattle, WA 98101

E-Mail Address: [pscholes@tnc.org](mailto:pscholes@tnc.org)

## Attachment 9 – References

- Bray, M.J. and J.M. Hooke, 1997. Prediction of soft-cliff retreat with accelerating sea level rise, *Journal of Coastal Research*, vol. 13, no. 2: p. 453-467.
- Brennan, J.S. 2007. *Marine Riparian Vegetation Communities of Puget Sound*. Puget Sound Nearshore Partnership Report No. 2007-02. Published by Seattle District, U.S. Army Corps of Engineers, Seattle, Washington.
- Cereghino, P., J. Toft, S. Simensted, E. Iverson, S. Campbell, C. Behrens, J. Burke, B. Craig. Review Draft 2010. *Puget Sound Nearshore Conservation Strategies 2010*.
- Drut, M.S. and J.B. Buchanan. 2000. *Northern Pacific Coast Regional Shorebird Management Plan*. <http://shorebirdplan.fws.gov/RegionalShorebird/downloads/NPACIFIC4.doc>
- Floberg, J., M. Goering, G. Wilhere, C. MacDonald, C. Chappell, C. Rumsey, Z. Ferdana, A. Holt, P. Skidmore, T. Horsman, E. Alverson, C. Tanner, M. Bryer, P. Iachetti, A. Harcombe, B. McDonald, T. Cook, M. Summers, D. Rolph. 2004. *Willamette Valley-Puget Trough-Georgia Basin Ecoregional Assessment, Volume One: Report*. Prepared by The Nature Conservancy with support from the Nature Conservancy of Canada, Washington Department of Fish and Wildlife, Washington Department of Natural Resources (Natural Heritage and Nearshore Habitat programs), Oregon State Natural Heritage Information Center and the British Columbia Conservation Data Centre.
- Grenier, C. 2010. *Principles for Strategic Conservation and Restoration in Puget Sound*. Puget Sound Nearshore Partnership Report No. 2010-01. Published by the Seattle District U.S. Army Corps of Engineers, Seattle, Washington.
- Island County Water Resources Advisory Committee. 2005. *Water Resources Inventory Area 6 (Whidbey & Camano Islands) Multi-species salmon recovery plan*. Coupeville, WA.
- Island County Water Resource Advisory Committee. 2010. *Water Resource Inventory Area 6, 3-Year Implementation Plan*.
- Johannessen, J. and M. Chase. 2005. *Island County Feeder Bluff and Accretion Shoreform Mapping: Final Report*. Report prepared for Island County Marine Resource Committee by Coastal Geologic Services, Bellingham, WA.
- Johannessen, J. and A. MacLennan. 2007. *Beaches and Bluffs of Puget Sound*. Puget Sound Nearshore Partnership Report No. 2007-04. Published by Seattle District, U.S. Army Corps of Engineers, Seattle, Washington.
- Puget Sound Action Team. 2005. *Regional Nearshore and Marine Aspects of Salmon Recovery in Puget Sound*. Delivered to Shared Strategy for Puget Sound for inclusion in the regional recovery plan.
- Puget Sound Nearshore Ecosystem Restoration Program. 2010. *Strategic Needs Assessment Report*.
- Puget Sound Partnership. 2008. *The Puget Sound Action Agenda: a strategy for cleaning up, restoring, and protecting Puget Sound by 2020*. Olympia, WA.
- Schlenger, P., A. MacLennan, E. Iverson, K. Fresh, C. Tanner, B. Lyons, S. Todd, R. Carman, D. Myers, S. Campbell, and A. Wick. In Review. *Strategic Needs Assessment Report*. Prepared for the Puget Sound Nearshore Ecosystem Restoration Project. Technical Report 2010-XX.
- Stillaguamish Tribe. 2009. *Stillaguamish estuary use by juvenile Chinook: Final Report*. Stillaguamish Tribe of Indians Natural Resources Department.