



Chelan County Natural Resource Department

316 Washington Street, Suite 401

Wenatchee, Washington 98801

P 509.667.6533

F 509.667.6527

Memorandum

Date: September 29, 2011
To: Michelle Doiron, Bonneville Power Administration
From: Mary Jo Sanborn, Chelan County Natural Resource Department
Subject: Nason Creek Upper White Pine (Chelan County, WA) Conceptual Project Description

Purpose

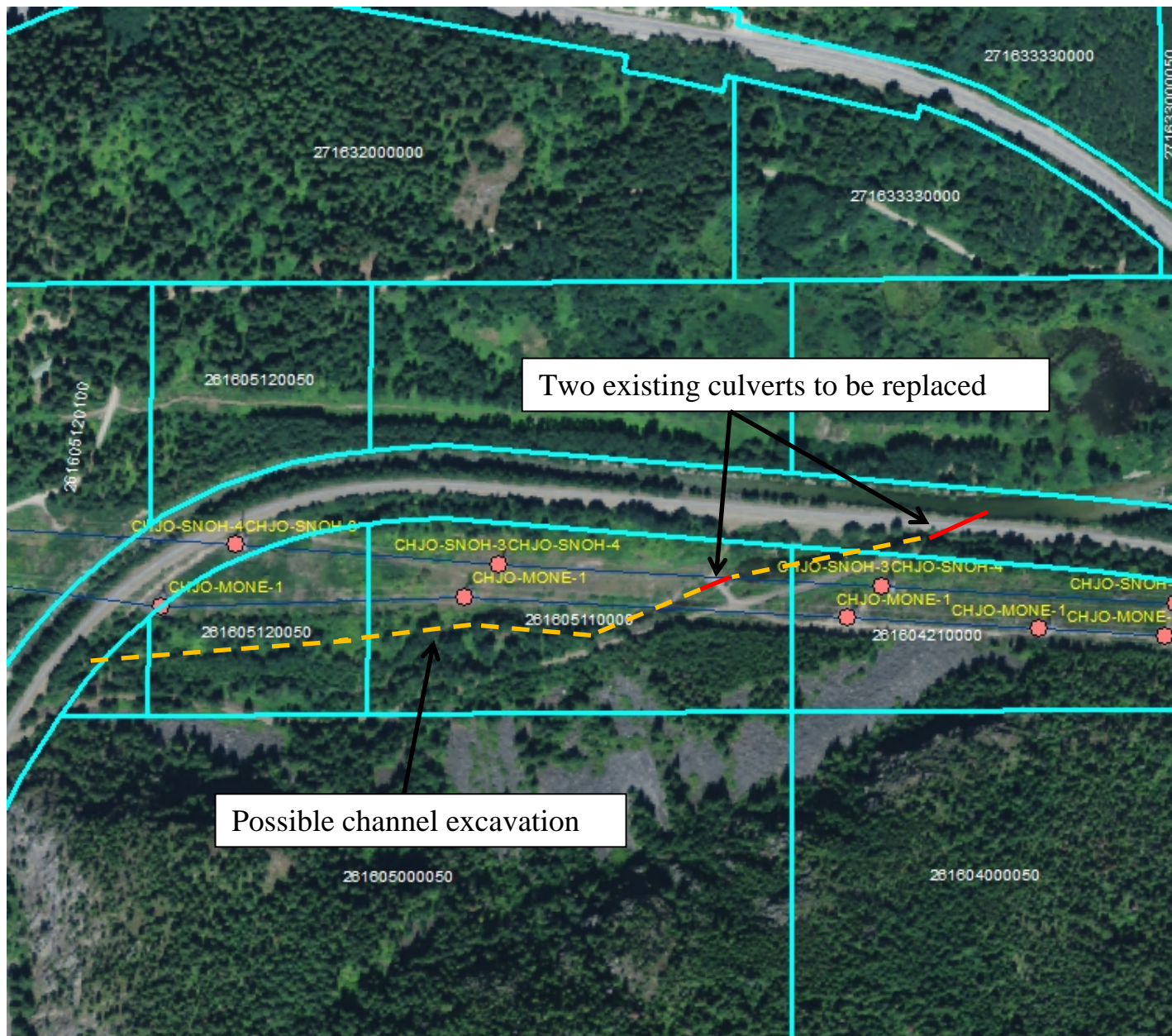
The purpose of this memo is to describe a potential salmon restoration project currently being evaluated that is partially located within the BPA transmission line corridor. The project is located within the NE ¼ of Section 5 and the NW ¼ of Section 4, T:26N, R:16E in Chelan County, WA (Chief Joseph–Snohomish #3 and Chief Joseph-Snohomish #4). Restoring natural river processes in Nason Creek has been identified as a high priority in the region for ESA species recovery. Chelan County is working with other project partners on an alternatives analysis for this reach of Nason Creek extending from river mile 12.0 near Merritt upstream to river mile 14.25. A selected alternative with 30% design is anticipated to be completed in spring 2012. Implementation of the selected alternative could happen as soon as 2013. Input from BPA on construction requirements under or near the transmission lines would help in selecting a preferred alternative and in completed designs and cost estimates.

Project Description

The mainstem of Nason Creek is channelized between two berms for over 1 mile within the project area. The channelization occurred over 50 year ago when BNSF re-located their tracks and moved the mainstem of Nason Creek to it's current alignment. Potential projects in this area range from breaching the berm on the north side of Nason Creek, placement of large wood structures in Nason Creek, riparian vegetation, and improving the hydrologic connection between the mainstem of Nason Creek and the former Nason Creek channel. Improving the hydrologic connection between the existing and former Nason Creek channel is the alternative that would partially occur within the BPA transmission line corridor. Attached is a map showing Nason Creek, the BNSF Railway and BPA transmission lines and towers. There is currently a 36" corrugated metal pipe under the BNSF Railway track and another culvert under the BPA access road that limit the hydrologic connection to Nason Creek. Thus, one of the proposed projects would include replacement of the two culverts to improve ESA listed salmon access to this habitat (shown in red on map). A secondary action may include some channel excavation to improve habitat conditions by removing fine sediment. Potential areas of excavation are shown in orange.

BPA Input

Please provide feedback on any construction constraints for the potential culvert replacement and channel excavation activities.



BPA Towers and Powerlines in the Vicinity of the Nason Creek Upper White Pine Project