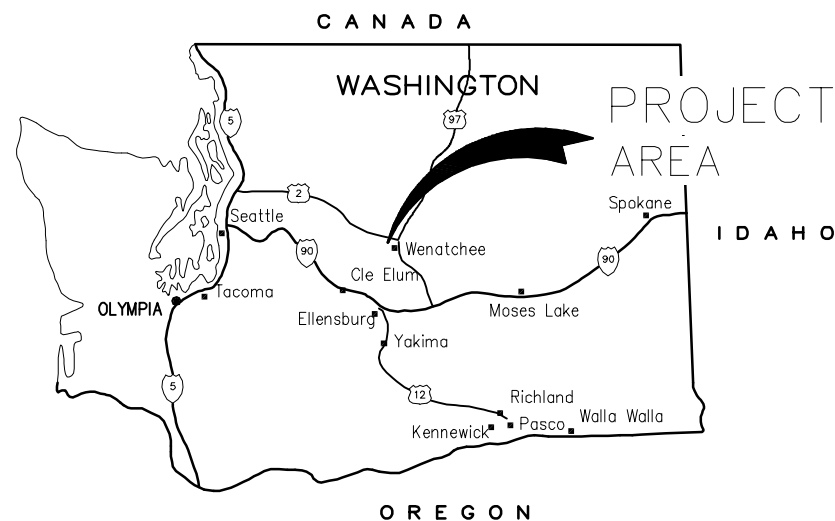


PIONEER WATER USERS ASSOCIATION GUNN DITCH IMPROVEMENTS CHELAN COUNTY, WA

30% DESIGN

JULY
2010



FA NO. 08-10-0026

FORSGREN
Associates Inc.

J:\Areas\CAD\08-10-0026 PIONEER DITCH\Civil\0-01.dwg 4/19/2010 4:14:33 PM PDT



SYMBOLS

- IRRIGATION CROSSING (PIPE)
- TEMPORARY BENCH MARK
- SANITARY SEWER MANHOLE
- MAILBOX
- UTILITY POLE
- GUY POLE/ANCHOR
- WATER METER
- FIRE HYDRANT
- WELL
- WATER VALVE
- IRRIGATION VALVE
- TURNOUT LOCATION
- APPROXIMATE AREA SERVED BY TURNOUT (ACRES)

STA: 10+00

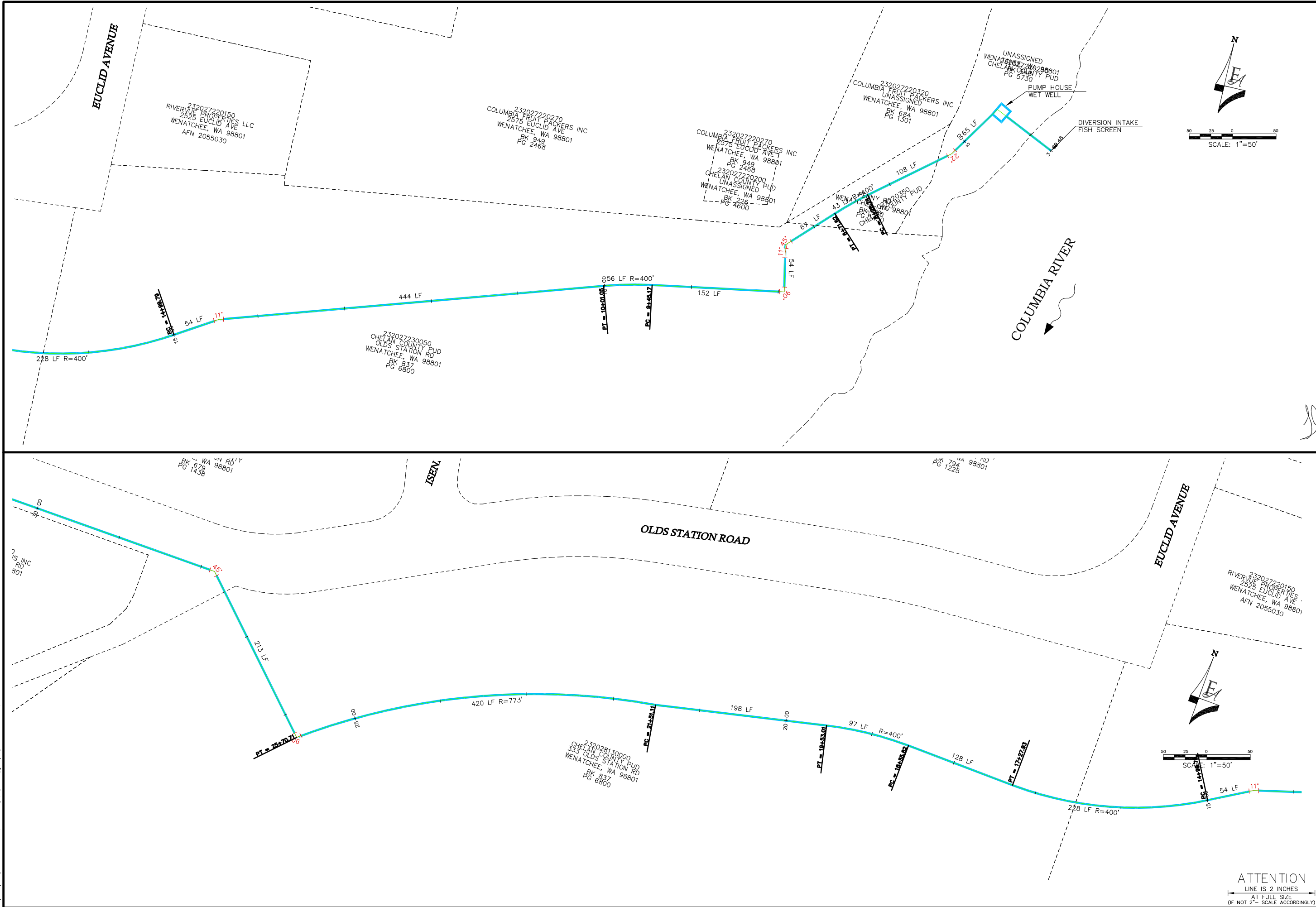
2.72



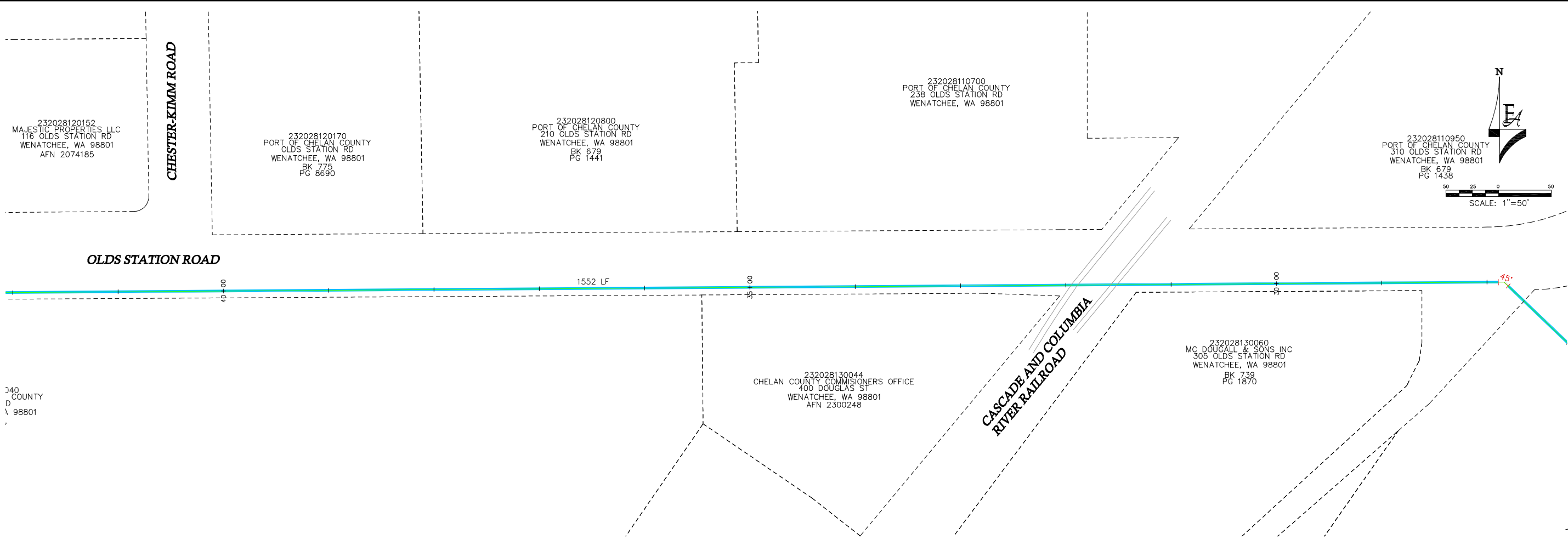
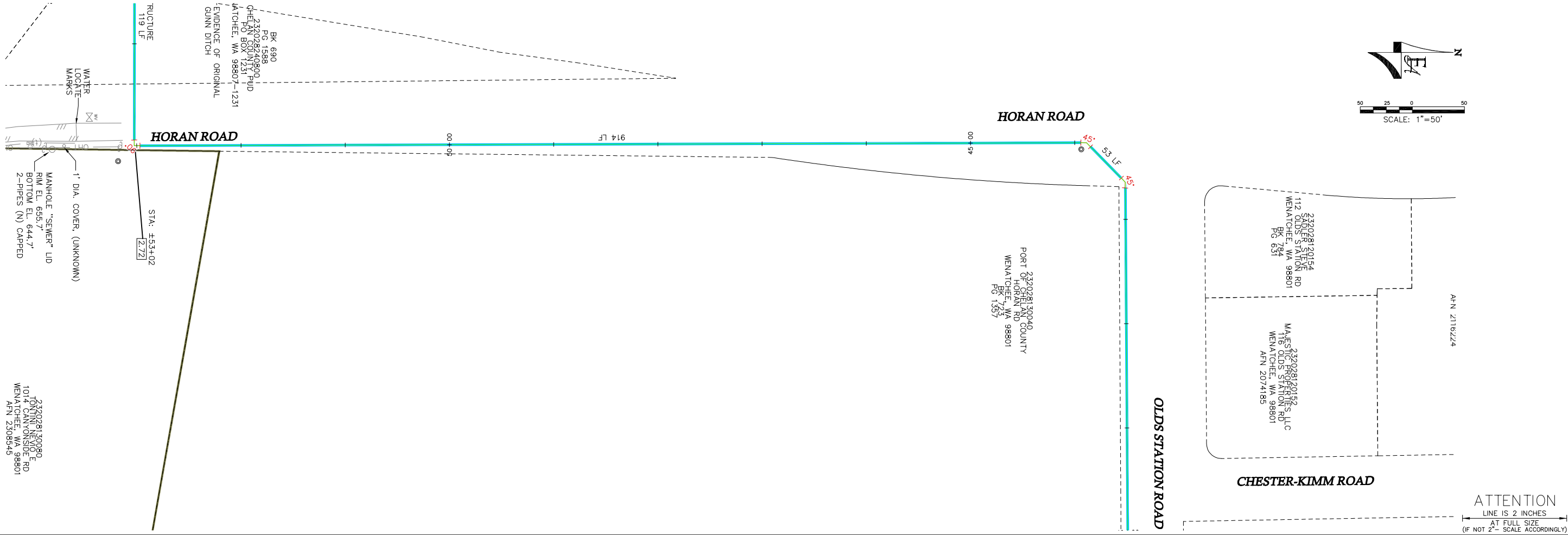
ATTENTION
LINE IS 2 INCHES
AT FULL SIZE
(IF NOT 2" = SCALE, ACCORDINGLY)

PROJECT NO. 08-10-0026		DRAWN		DESIGNED		APPROVED		DATE	
30% DESIGN		T.23 N., R.19 & 20 E., W.M.		CHELAN COUNTY, WA.		GUNN DITCH		PIONEER WATER USERS ASSOCIATION	
INDEX		PAGE NO.		SHEET NO.		NO.		REVISIONS	
BY		DATE		NO.		REVISIONS		DATE	
This document or any part thereof in detail or design shall not be used for construction without the written authorization of Forsgren Associates Inc.									
FORSGREN Associates Inc. 112 OLDS STATION ROAD, SUITE A, WENATCHEE, WA 98801 PH: 509.667.1426 FAX: 509.663.6166									

J:\Users\CAD\08-10-0026 PIONEER DITCH\Civil\08-10-0026.dwg 4/19/2010 4:14:33 PM PDT



PROJECT NO. 08-10-0026		DRAWN		DESIGNED		APPROVED		DATE	
1A		PAGE NO.		GUNN DITCH		PIONEER WATER		USERS ASSOCIATION	
1A		PAGE NO.		30% DESIGN		T.23 N., R.19 & 20 E., W.M.		CHELAN COUNTY, WA.	
1A		PAGE NO.		FORSGREN Associates Inc.		112 OLDS STATION ROAD, SUITE A, WENATCHEE, WA 98801		PH: 509.667.1426 FAX: 509.663.6166	
1A		PAGE NO.		PROFESSIONAL ENGINEER		REGISTERED		NO. 30264	
1A		PAGE NO.		THOMAS S. THURGOOD		STATE OF WASHINGTON		NO. 30264	
1A		PAGE NO.		This document or any part thereof in detail or design shall not be copied, reproduced, or otherwise used without the written authorization of Forsgren Associates Inc.		BT		DATE	



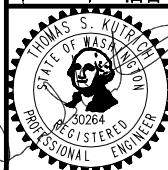
SHEET NO.

1B

GUNN DITCH
PIONEER WATER
USERS ASSOCIATION

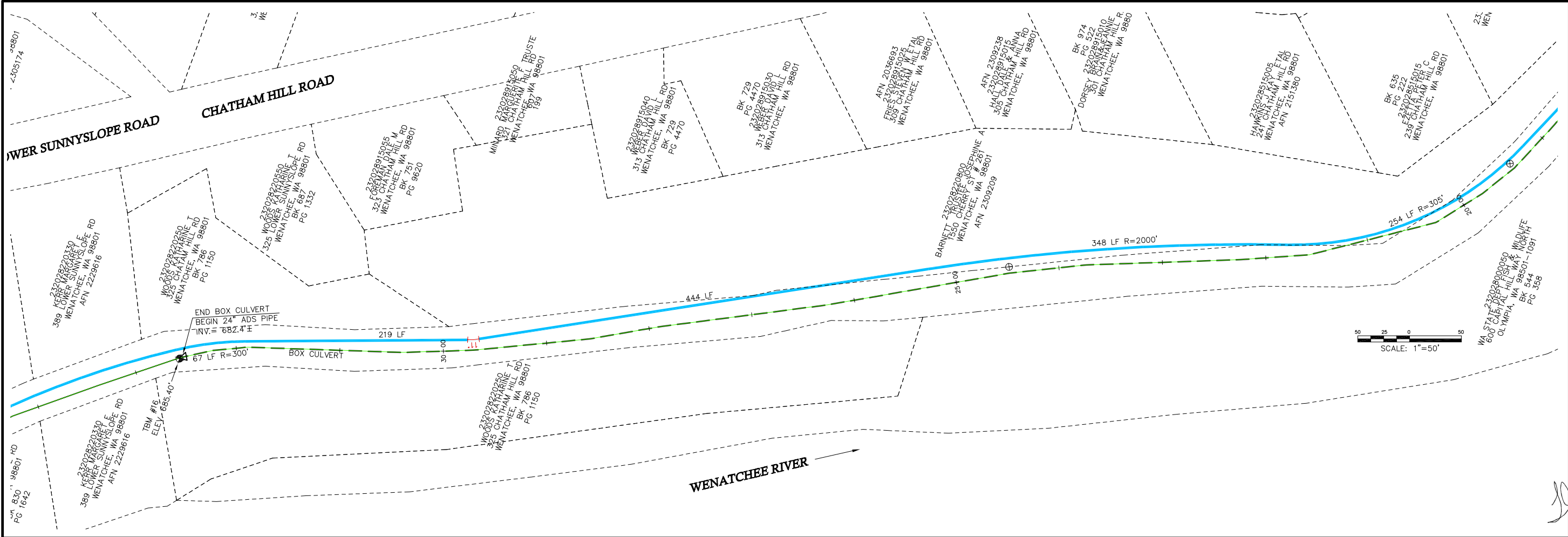
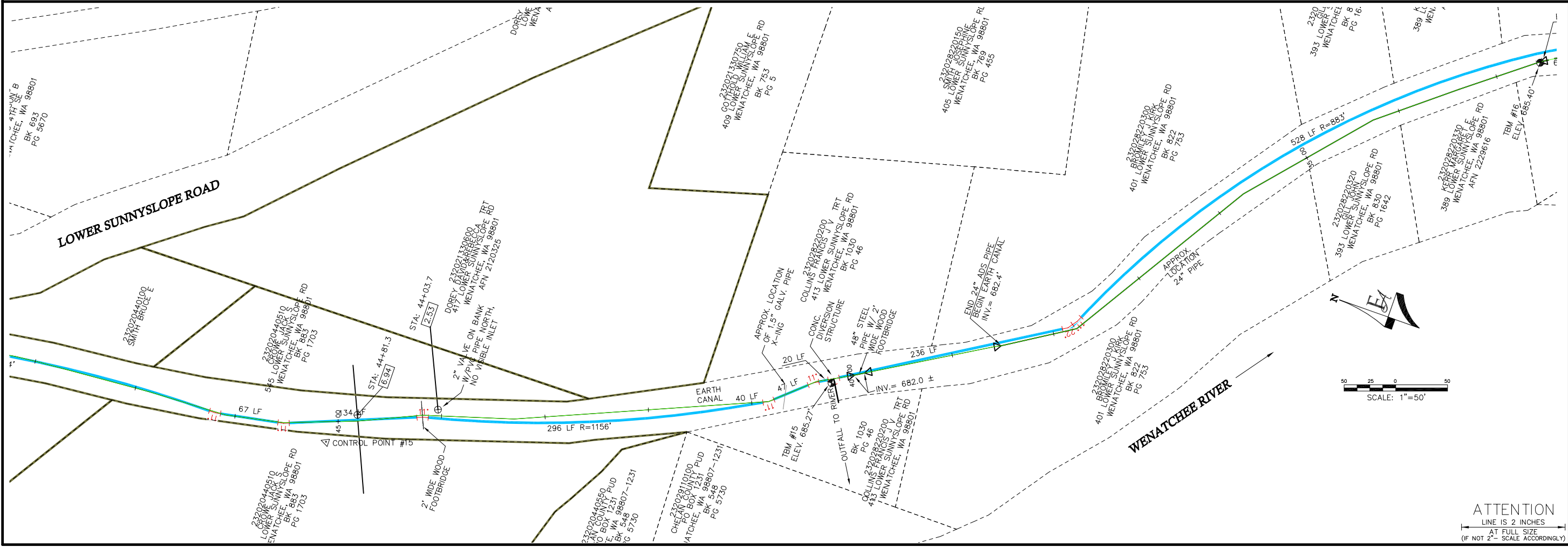
30% DESIGN
T.23 N., R.19 & 20 E., W.M.
CHELAN COUNTY, WA.

PROJECT NO. 08-10-0026
DRAWN
DESIGNED
APPROVED
DATE

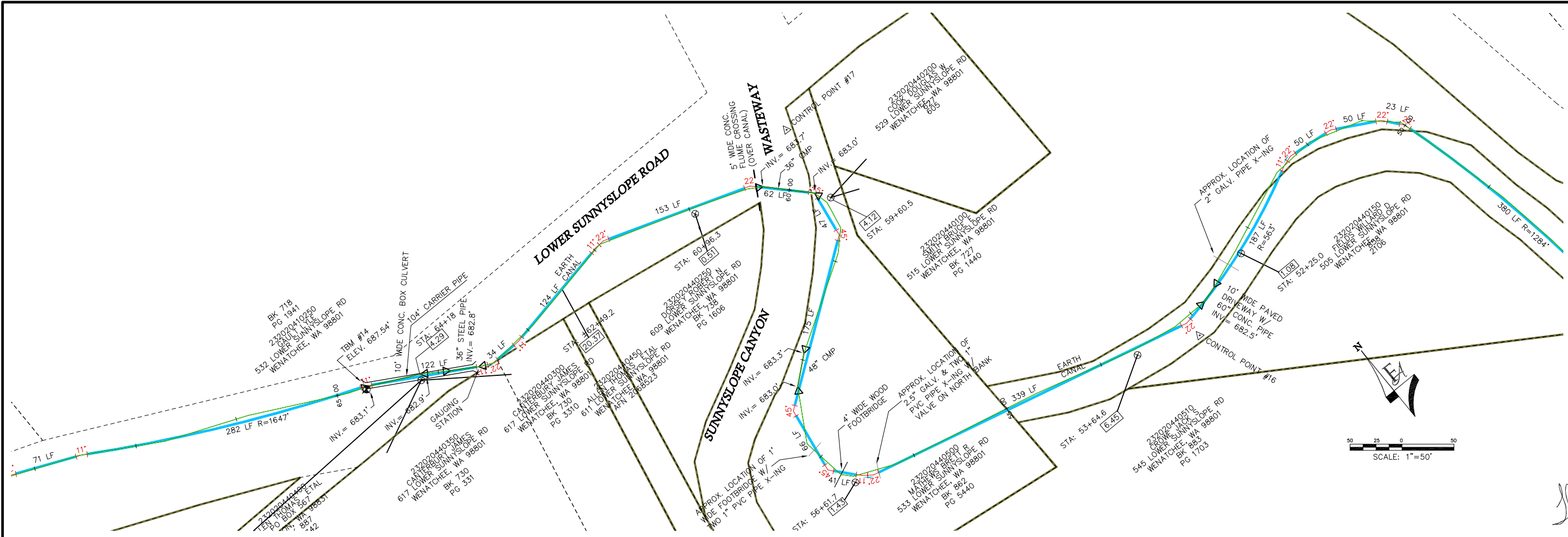
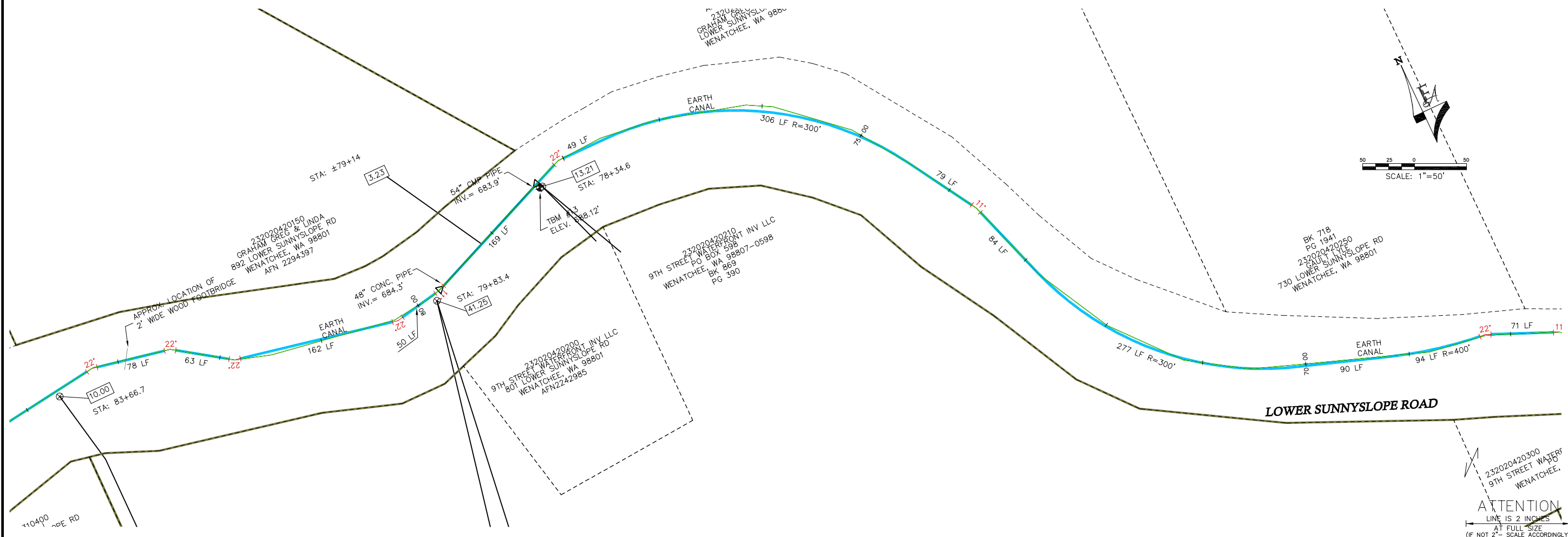


FORSGREN
Associates Inc.
112 OLDS STATION ROAD, SUITE A, WENATCHEE, WA 98801
PH: 509.667.1426 FAX: 509.663.6166

NO. REVISIONS BY DATE
This document or any part thereof in detail or design shall not be used for construction without the written authorization of Forsgren Associates Inc.



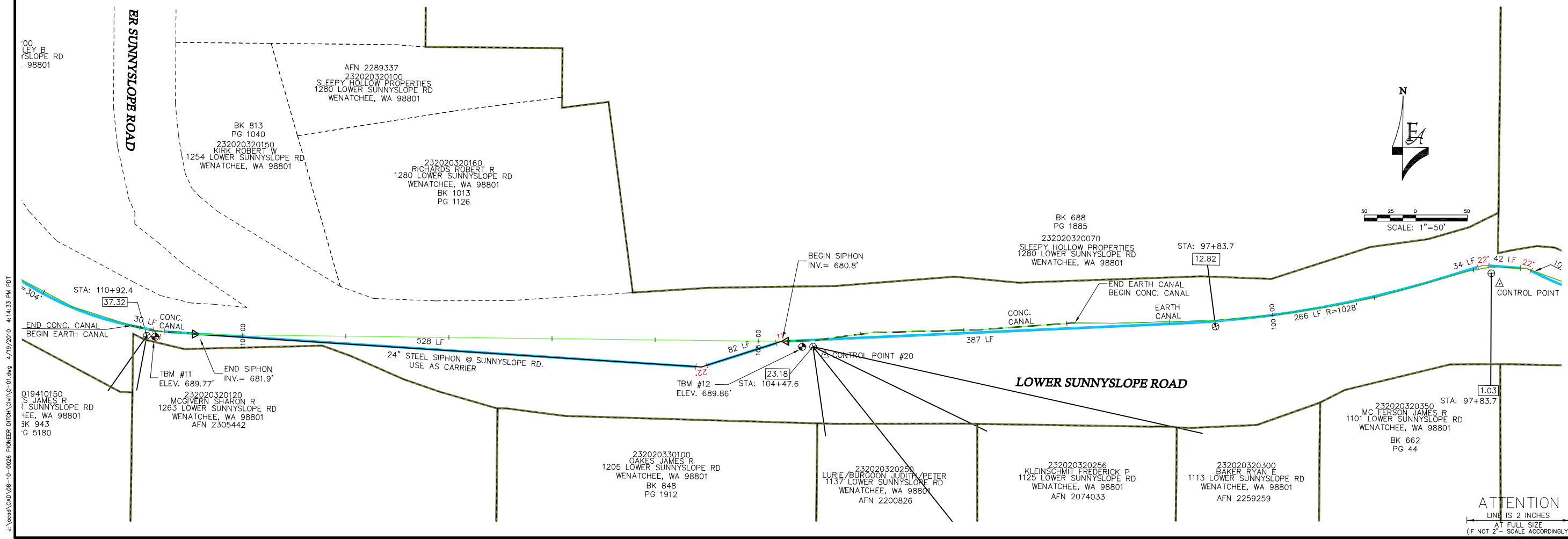
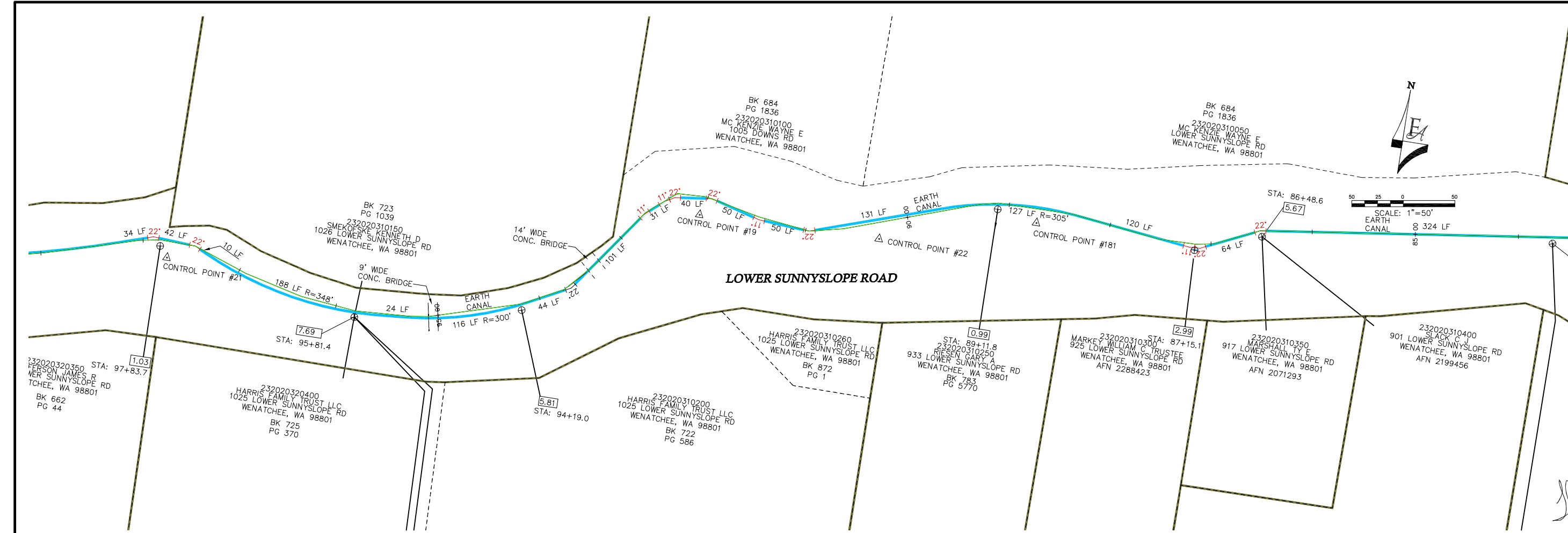
J:\Users\CAD\08-10-0026 PIONEER DITCH\DWG-01.dwg 4/19/2010 4:14:33 PM PDI



PROJECT NO. 08-10-0026	DRAWN	DESIGNED	APPROVED	DATE	BY	REVISIONS	NO.	DATE
30% DESIGN T.23 N., R.19 & 20 E., W.M. CHELAN COUNTY, WA.								
GUNN DITCH PIONEER WATER USERS ASSOCIATION								
SHEET NO. 3 PAGE NO.								

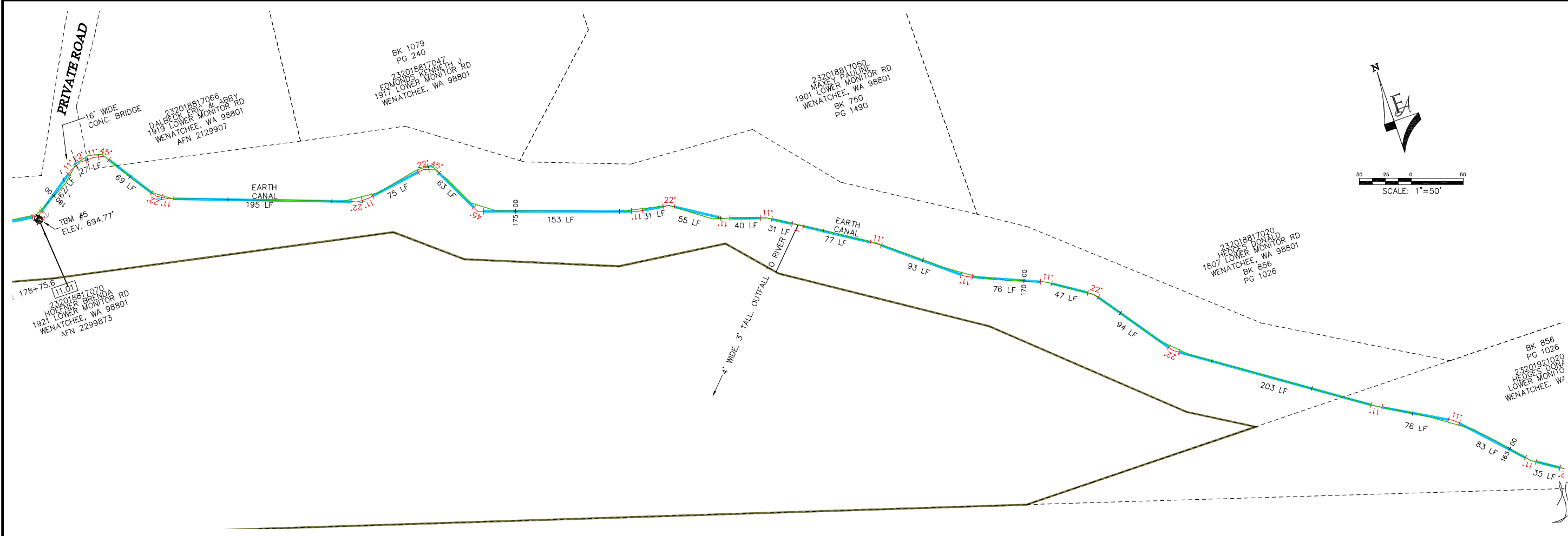
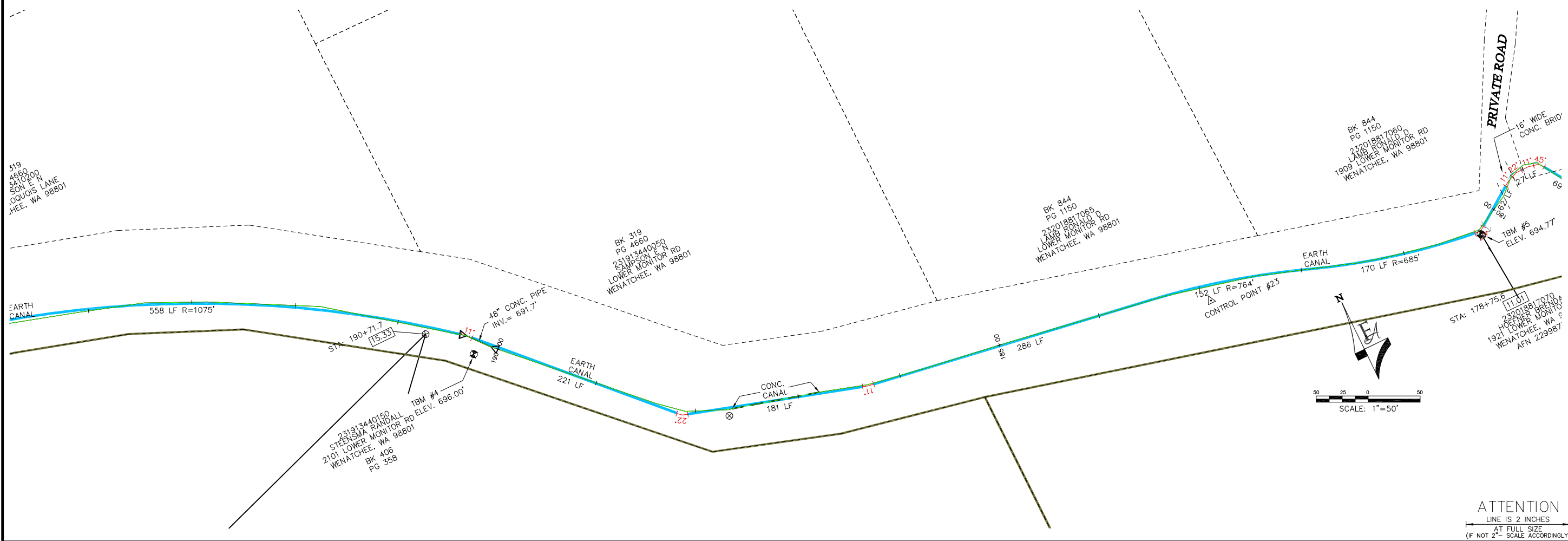
FORSGREN Associates Inc.
112 OLDS STATION ROAD, SUITE A, WENATCHEE, WA 98801
PH: 509.667.1426 FAX: 509.663.6166

ATTENTION
LINE IS 2 INCHES
AT FULL SIZE
(IF NOT 2" = SCALE, ACCORDINGLY)



PROJECT NO. 08-10-0026		DRAWN		DESIGNED		APPROVED		DATE	
30% DESIGN		T.23 N., R.19 & 20 E., W.M.		CHELAN COUNTY, WA.		GUNN DITCH		PIONEER WATER	
ATTENTION		LINE IS 2 INCHES		AT FULL SIZE		(IF NOT 2" - SCALE ACCORDINGLY)		SHEET NO. 4	
PAGE NO. 4		FORSGREN Associates Inc.		112 OLDS STATION ROAD, SUITE A, WENATCHEE, WA 98801		PH: 509.667.1426 FAX: 509.663.6166		This document or any part thereof in detail or design is the property of Forsgren Associates Inc. and shall not be copied without the written authorization of Forsgren Associates Inc.	

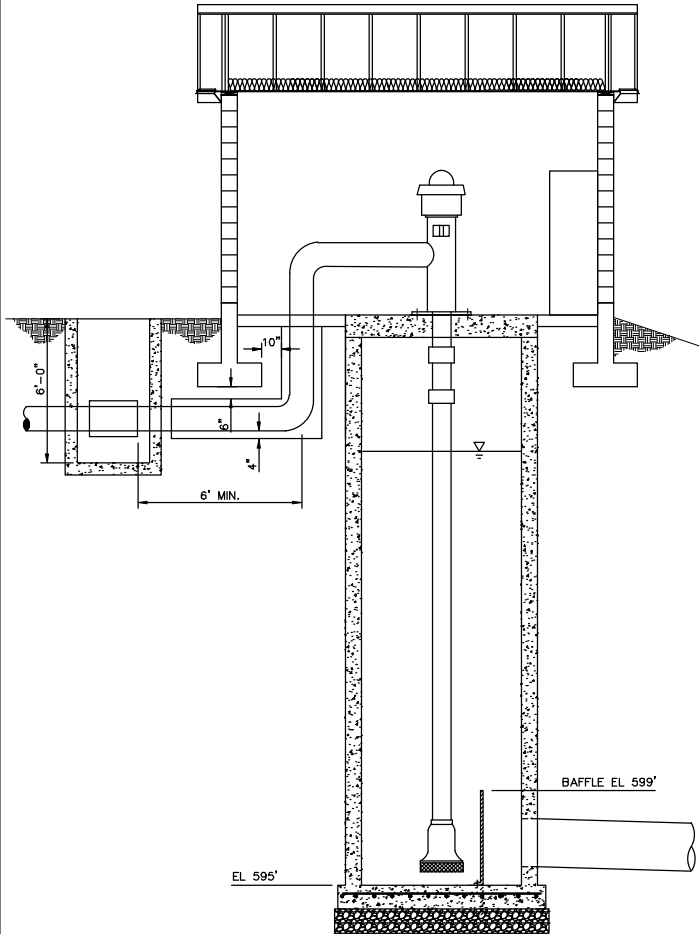
J:\Users\CAD\08-10-0026 PIONEER DITCH\DWG-01.dwg 4/19/2010 4:14:33 PM PLOT



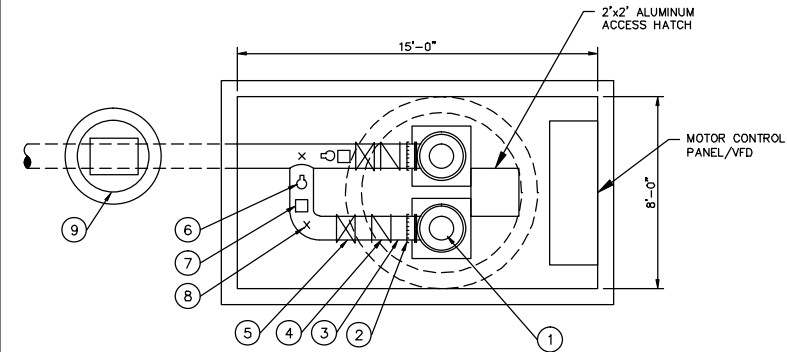
PROJECT NO. 08-10-0026		DRAWN		DESIGNED		APPROVED		DATE	
7		PAGE NO.		FORSGREN Associates, Inc.		112 OLDS STATION ROAD, SUITE A, WENATCHEE, WA 98801		TEL: 509.667.1426 FAX: 509.663.6166	
SHEET NO.		7		PIONEER WATER		GUNN DITCH		30% DESIGN	
PAGE NO.		7		USERS ASSOCIATION		T.23 N., R.19 & 20 E., W.M.		CHELAN COUNTY, WA.	

This document or any part thereof in detail or design shall not be used for any other project without the written authorization of Forsgren Associates Inc.

P:\810026 - Pioneer Ditch\CADD\Construction Drawings\Pioneer Well Mechanical Plan.dwg, 7/22/2010 5:11:33 PM, rb

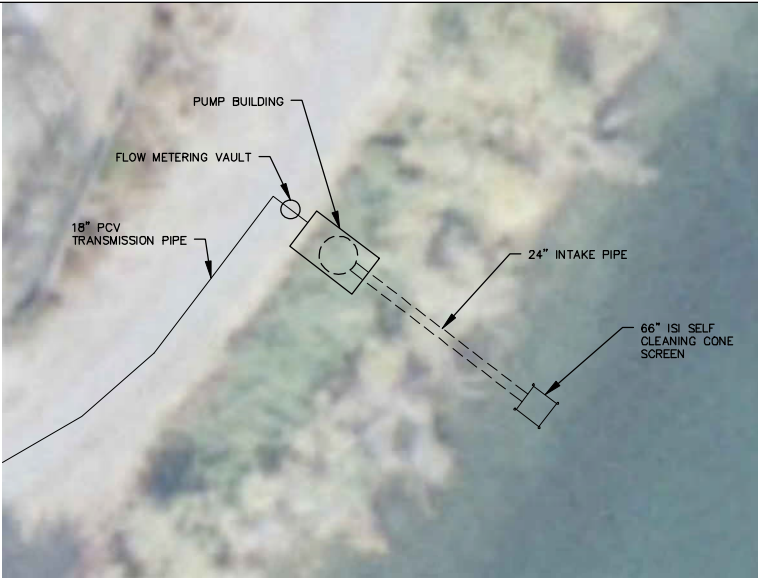
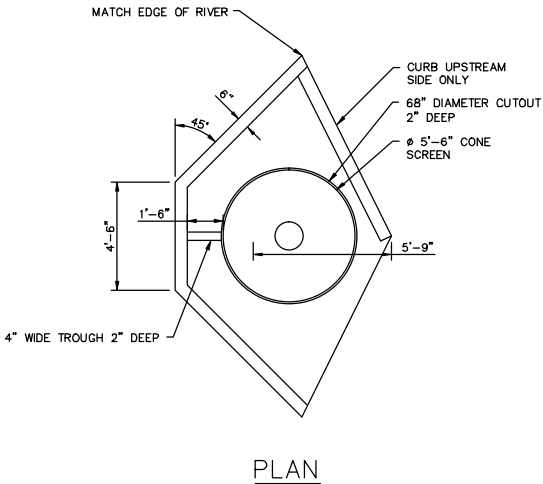


PUMP BUILDING ELEVATION
1/4" = 1'-0"



PUMP BUILDING PLAN
1/4" = 1'-0"

ITEM NUMBER	DESCRIPTION
1	150 HP VERTICAL TURBINE PUMP
2	12" FLANGE COUPLING ADAPTER
3	12" WELDED STEEL PIPE
4	12" WAFER CHECK VALVE
5	12" GEAR OPERATED BUTTERFLY VALVE
6	2" COMBINATION AIR VALVE
7	PRESSURE GAUGE
8	PIPE SUPPORT
9	ULTRASONIC FLOW METER



PUMP BUILDING LOCATION MAP
1" = 20'-0"

PUMP NOTES

A. FURNISH, INSTALL AND WARRANT FOR 1 YEAR OF SERVICE TWO COMPLETE VERTICAL TURBINE PUMP ASSEMBLIES AND RELATED EQUIPMENT TO MEET THE FOLLOWING CONDITIONS:

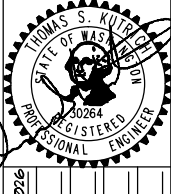
A. PUMP CAPACITY	1,750 GPM
B. TOTAL DYNAMIC HEAD	241 FT
C. COLUMN LENGTH	25 FT
D. DEPTH OF SETTING PUMP INLET	225 FT
E. POWER	480 VOLTS
F. PHASE	3 PHASE

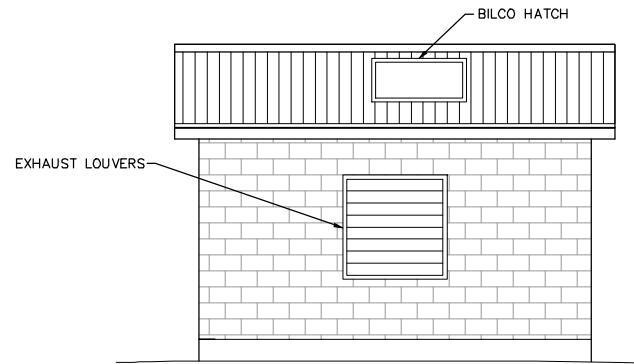
B. PROVIDE REDUCED VOLTAGE SOLID STATE (RVSS) MOTOR CONTROLLERS FOR EACH PUMP METER.
C. PROVIDE PULSE WIDTH MODULATED VARIABLE FREQUENCY DRIVE CONTROLLERS FOR EACH PUMP MOTOR.
D. PUMP CONTROLS SHALL BE CONFIGURED TO ALLOW ALTERNATION OF LEAD AND LAG PUMP POSITION FOR EACH PUMP.

FISH SCREEN NOTES

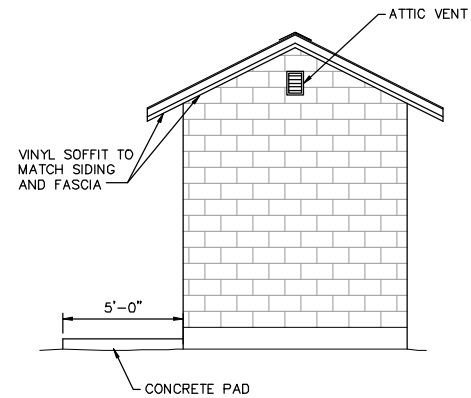
A. PROVIDE A SELF-CLEANING INTAKE SCREENING STRUCTURE AND MECHANISM MEETING WASHINGTON STATE AND NATIONAL MARINE FISHERIES SERVICE REQUIREMENTS.
B. SCREENING SURFACE AREA SHALL MAINTAIN A MAXIMUM APPROACH VELOCITY OF 0.4 FEET PER SECOND AS DEFINED BY THE WASHINGTON DEPARTMENT OF FISH & WILDLIFE.
C. PROVIDE AN ISI CONE SCREEN MODEL SIC66-18 OR APPROVED EQUAL.

ATTENTION
LINE IS 2 INCHES
AT FULL SIZE
(IF NOT 2" - SCALE ACCORDINGLY)

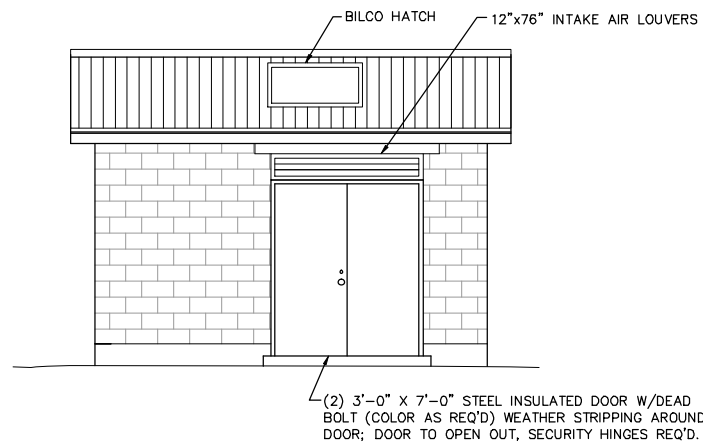
NO.	REVISIONS	BY	DATE
FORSGREN Associates Inc. 112 OLDS STATION ROAD, SUITE A, WENATCHEE, WA 98801 PH: 509.667.1426 FAX: 509.663.6166			
			
PROJECT NO.	08-10-0016	DESIGN	
		CHECKED	
		APPROVED	
		DATE	
PRELIMINARY MAP T23 N, R19 & 20 E, W.M. CHELAN COUNTY, WA.		GUNN DITCH PIONEER WATER USER'S ASSOCIATION	
10		PAGE NO.	



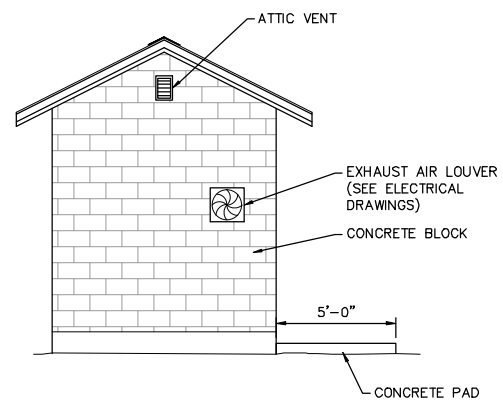
NORTH ELEVATION
SCALE: 1/4" = 1'-0"



EAST ELEVATION
SCALE: 1/4" = 1'-0"



SOUTH ELEVATION
SCALE: 1/4" = 1'-0"



WEST ELEVATION
SCALE: 1/4" = 1'-0"

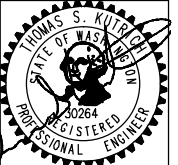
ATTENTION
 LINE IS 2 INCHES
 AT FULL SIZE
 (IF NOT 2"—SCALE ACCORDINGLY)

11

**GUNN DITCH
PIONEER WATER
USER'S ASSOCIATION**

PRELIMINARY MAP
T23 N, R19 & 20 E, WM
CHELAN COUNTY, WA.

PROJECT NO.	08-10-0026
DRAWN	
DESIGNED	
APPROVED	
QA/QC	



FORSREN
Associates Inc.
11112 OLDS STATION ROAD, SUITE A, WENATCHEE, WA 98801
PH: 509.667.1426 FAX: 509.663.6166

NO.	REMARKS	BY	DATE
	This document or any part thereof in detail or design concept is the personal property of Forsgren Associates Inc. and shall not be copied without the written authorization of Forsgren Associates Inc.		